



**SYNOPTIC INTERTIDAL BENTHIC SURVEY**

# **SIBES**

**ACROSS THE DUTCH WADDEN SEA**

**Report on data collected from 2008 to 2010**



Royal Netherlands Institute for Sea Research

[www.nioz.nl](http://www.nioz.nl)



## **SYNOPTIC INTERTIDAL BENTHIC SURVEY**

# **SIBES**

## **ACROSS THE DUTCH WADDEN SEA**

### **Report on data collected from 2008 to 2010**

Tanya J. Compton, Sander Holthuijsen, Anita Koolhaas, Anne Dekinga, Job ten Horn, Jeremy Smith, Ysbrand Galama, Maarten Brugge, Jaap van der Meer, Henk W. van der Veer and Theunis Piersma

Prepared for the

Nederlandse Aardolie Maatschappij b.v.

(NAM)

February 2012



## Authors

Tanya J. Compton, Sander Holthuijsen, Anita Koolhaas, Anne Dekinga, Job ten Horn, Jeremy Smith, Ysbrand Galama, Maarten Brugge, Jaap van der Meer, Henk W. van der Veer and Theunis Piersma

## Cover

Picture by Ysbrand Galama

Photo by Joana Cardoso

Header design by Blackbookink.com.au

## For information please contact

Tanya J. Compton  
Netherlands Institute for Sea Research  
PO Box 59  
1790 AB  
Den Burg  
The Netherlands

e-mail: [tanya.compton@nioz.nl](mailto:tanya.compton@nioz.nl)

Phone: +31-222-369383

Fax: +31--222-319674

Report No:  
Report date:

2012.1.SIBES.NIOZ  
February 2012

## CONTENTS

|                                      |    |
|--------------------------------------|----|
| 1. SUMMARY.....                      | 6  |
| 2. PREFACE .....                     | 8  |
| 3. INTRODUCTION.....                 | 8  |
| 4. SIBES .....                       | 9  |
| 5. AIMS .....                        | 10 |
| 6. METHODS.....                      | 10 |
| Field sampling.....                  | 10 |
| Laboratory analysis.....             | 11 |
| Sediment analysis .....              | 13 |
| Predicted subsidence and SIBES ..... | 14 |
| 7. ANALYSIS.....                     | 15 |
| Community patterns .....             | 15 |
| Individual species.....              | 15 |
| 8. RESULTS .....                     | 17 |
| Community patterns .....             | 17 |
| Individual species.....              | 22 |
| 9. DISCUSSION.....                   | 36 |
| 10. CONCLUSIONS.....                 | 38 |
| 11. ACKNOWLEDGEMENTS .....           | 39 |
| 12. REFERENCES .....                 | 41 |

### Figures

|  |    |
|--|----|
| Figure 1. SIBES sampling sites across the Dutch Wadden Sea, with additional points around the Oost Ameland and Moddergat region.   | 12 |
| Figure 2. Predicted subsidence at the SIBES sampling points near the three areas of gas extraction in the eastern Dutch Wadden Sea.  | 14 |
| Figure 3. A comparison of the data distributions of total density (nrs/m <sup>2</sup> , square root transformed), richness and biomass (g AFDM/m <sup>2</sup> ) within a sample at the predicted subsidence areas versus the remaining Wadden Sea. | 18 |
| Figure 4. Densities of macrofauna (numbers per square metre, nrs/m <sup>2</sup> ) at the SIBES sample sites from 2008 to 2010.   | 19 |
| Figure 5. Number of operational taxonomic units (OTUs) or alpha diversity, at each sample point from the SIBES survey for all years.   | 20 |

|           |   |    |
|-----------|---|----|
| Figure 6. | Total biomass (g AFDM/m <sup>2</sup> ) at the SIBES sample points for 2008 to 2010.   | 21 |
| Figure 7. | The histogram provides a comparison between the F-value from the raw data model versus the F-values from the simulated GLMs (bars).   | 22 |
| Figure 8. | Densities (nrs/m <sup>2</sup> ) of The Baltic Tellin <i>Macoma balthica</i> across the Dutch Wadden Sea in the three survey years.    | 23 |
| Figure 9  | The histogram provides a comparison between the F-value from the raw data model versus the F-values from the simulated GLMs.          | 25 |
| Figure 10 | Densities (nrs/m <sup>2</sup> ) of the polychaete <i>Alitta succinea</i> across the Dutch Wadden Sea in the three survey years.       | 26 |
| Figure 11 | The histogram provides a comparison between the F-value from the raw data model versus the F-values from the simulated GLMs (bars).   | 28 |
| Figure 12 | Densities (nrs/m <sup>2</sup> ) of the razor clam <i>Ensis directus</i> across the Dutch Wadden Sea in the three survey years.        | 29 |
| Figure 13 | The histogram provides a comparison between the F-value from the raw data model versus the F-values from the simulated GLMs.          | 30 |
| Figure 14 | Densities (nrs/m <sup>2</sup> ) of the polychaete <i>Scoloplos cf. armiger</i> across the Dutch Wadden Sea in the three survey years. | 31 |
| Figure 15 | The histogram provides a comparison between the F-value from the raw data model versus the F-values from the simulated GLMs.          | 33 |
| Figure 16 | Densities (nrs/m <sup>2</sup> ) of the polychaete <i>Capitella capitata</i> across the Dutch Wadden Sea in the three survey years.    | 34 |
| Figure 17 | Sediment grain size composition across the Dutch Wadden Sea in 2008 and 2010 (Median grain size, µm).                                 | 35 |

## Appendices

|             |  |    |
|-------------|--|----|
| Appendix 1. | Results from the generalized linear model (GLM, quasi poisson distributed errors) to examine whether there are significant differences between the densities of individual OTUs across the different regions in 2010. .... | 45 |
| Appendix 2. | Summed total biomass of OTUs in the Dutch Wadden Sea from 2008 to 2010. ....   | 49 |
| Appendix 3. | Total density of the most densely occurring OTUs across the SIBES sampling sites (Sum Density). ....   | 51 |
| Appendix 4. | The OTUs with the widest distributional range, in terms of occurrence, across the Dutch Wadden Sea from 2008 to 2010.....  | 53 |
| Appendix 5. | Examples of three of the 1000 randomly generated subsidence regions used in a single simulated GLM model. ....   | 55 |
| Appendix 6. | Areas sampled in each month of the SIBES survey from 2008 to 2010. ....  | 56 |
| Appendix 7. | Distribution of <i>Cerastoderma edule</i> in 2008, 2009 and 2010. Darker colours indicate higher densities. ....   | 57 |

|              |  |    |
|--------------|--|----|
| Appendix 8.  | Distribution of <i>Lanice conchilega</i> in 2008, 2009 and 2010. Darker colours indicate higher densities..... | 58 |
| Appendix 9.  | Tidal exposure time (%) as estimated by the Rijkswaterstaat. ....  | 59 |
| Appendix 10. | Protocols for macrofauna analyses.....   | 60 |
| Appendix 11. | Protocols for sediment analyses. ....  | 62 |



## 1. SUMMARY

The Wadden Sea, recognised as a wetland and heritage site of international importance (Ramsar status, UNESCO World Heritage Site), covers an area of almost eight thousand square kilometres and stretches from The Netherlands to Denmark, with a large part of this ecosystem falling within The Netherlands. Ecosystem services provided by the Wadden Sea to neighbouring coastal areas are numerous. Economic services include fisheries, and ecological services include essential habitat to migratory shorebirds that fuel-up in the Wadden Sea prior to flying to the Arctic or Africa.

Benthic macrofauna are an integral component of the Wadden Sea ecosystem. Defined as organisms greater than 1 mm in size, they provide food sources to humans and many animal species, especially migratory shorebirds. In addition, they are pivotal in keeping the ecosystem functioning, as they recycle nutrients, decompose organic matter and regulate nutrient cycles. Thus substantial changes to the macrofauna community could induce changes that cascade through the ecosystem.

To assess whether there are changes in the ecosystem due to land subsidence, a “Synoptic Intertidal Benthic Survey” (SIBES) has been completed annually across the entire Dutch Wadden Sea since 2008. The SIBES survey is comprehensive in the Dutch context and covers an area of 2483 km<sup>2</sup> or ~4500 sampling stations.

Results from the SIBES survey over the last three years show indications that some species had higher densities in the areas of predicted subsidence, however, these species differed among years. In 2010, *Macoma balthica*, *Alitta succinea* and *Ensis directus* had significantly higher densities in the areas of predicted subsidence. In 2009, it was observed that *Alitta virens*, *Urothoe poseidonis*, *Magelona johnstoni* and *Heteromastis filiformis* differed significantly in the predicted gas subsidence regions relative to the remainder of the Wadden Sea. In 2008, *Nephtys cirrosa*, *Pygospia elegans*, *Marenzelleria viridis* and *Spio martinensis* were different in the predicted subsidence areas. Land subsidence by gas extraction might be a direct cause for significant differences in species abundance within the predicted subsidence areas. However, a better understanding of other environmental drivers of species abundance will be necessary to confirm our findings. Elucidation of the drivers of species abundance, in combination with repeated surveys will increase the power of our analyses.

Despite the observed spatial and temporal variation in community and species patterns, interesting parallels in the distribution patterns, densities, biomass and species richness of the benthic macrofauna were noted between years. For example, high densities, high biomass and high species richness of the macrofauna were found along the Frisian coastline, close to Schiermonnikoog, near Griend and also in the vicinity of Vlieland. A comparison of the areas predicted to subside versus the remainder of the Wadden Sea showed that the

total biomass of all macrofauna at a single sampling point (g AFDM/m<sup>2</sup>) was consistently lowest in the Wadden Sea near East Groningen for all three years. These results are similar to the alpha diversity estimates. Such recurring patterns between years suggests that given more SIBES surveys are completed we will be able to understand factors driving macrofaunal species distributions, and identify effects of gas subsidence.

In conclusion, the SIBES time series indicates that some species show differences in the predicted areas of subsidence. However, there is also a large amount of variation in the species responses between years, indicating the inherent natural variability of the system. We strongly suggest that the SIBES sampling continues so that insights into factors driving natural variation can be gained, and consequently the role of anthropogenic factors can be determined.



## 2. PREFACE

The Wadden Sea is an important intertidal area (Ramsar status, UNESCO World Heritage Site recognition) that provides numerous economic and ecological services to the Dutch population. To assess whether there are changes in the ecosystem due to land subsidence, a "Synoptic Intertidal Benthic Survey" (SIBES) has been completed annually across the entire Dutch Wadden Sea since 2008. The SIBES survey covers an area of 2483 km<sup>2</sup> or ~4500 sampling stations.

The goal of SIBES is to monitor macrofauna abundance, biomass and community composition for changes associated with land subsidence. But to detect changes in macrofauna, e.g. due to land subsidence, it is aimed that the sampling be conducted over long temporal scales, as well as large spatial scales. Long-term sampling is essential to teasing apart inherent natural variation from anthropogenic effects.

SIBES was funded by the ZKO Wadden Sea programme for monitoring of the western Wadden Sea and by NAM for the ecological monitoring of the gas drilling areas in the eastern Wadden Sea.

## 3. INTRODUCTION

The Wadden Sea recognised as a wetland of international importance (Ramsar status, UNESCO World Heritage Site recognition), covers an area of almost eight thousand square kilometres and stretches from The Netherlands to Denmark. The Wadden Sea not only provides important ecological services but also numerous economic services to populations along its coastline (Wolff 1983). Economic services include fisheries, and ecological services include essential habitat to migratory shorebirds who use this area to fuel-up prior to flying to the Arctic or Africa (Beukema 1976, Wolff 1983, Zwarts 1996, van de Kam et al. 2004).

The Dutch Wadden Sea forms a large part of this dynamic tidal system; ~2500 of the 8000 km<sup>2</sup> (Wolff 2000). The proximity of the Dutch Wadden Sea to numerous coastal populations has meant that this area has a long history of human exploitation and environmental change (Wolff 2000). For example, a large area of tidal flats were lost after the closing of the Afsluitdijk in 1932 and seagrass beds disappeared after the outbreak of a disease in 1932 (see reviews by Wolff 2000, Wolff 2005, Kraan et al. 2011). Although these changes are well known, it is difficult to pinpoint the consequences of such changes because at that time the Wadden Sea was not monitored.

In summary, it is difficult to detect change in a system without monitoring both before and after an impact (Underwood 1997). Thus to identify whether factors associated with human exploitation are having negative impacts we need to monitor the system. But teasing apart the drivers of change either due to natural variation or human induced factors is a major challenge. To tease apart these factors, data needs to be collected across large spatial and temporal scales.

## 4. SIBES

In 2008, the NIOZ initiated a synoptic intertidal benthic survey (SIBES) across the entire Dutch Wadden Sea with the goal of monitoring mud-dwelling organisms or macrofauna for their abundance, biomass and composition. To tease apart effects of subsidence, due to gas drilling, from the inherent natural variation in the system it is aimed that this survey be conducted over long temporal and large spatial scales. Without long-term data, short-term natural variability can mask chronic and/or cumulative impacts, often until critical changes occur (Hewitt et al. 2001, Hewitt & Thrush 2007).

Macrofauna are defined as benthic organisms that are greater than 1 mm in size (Gray & Elliott 2009), and were chosen as the unit of examination for this work as they are relatively cost-effective to monitor and have proven to be highly responsive to change (Beukema et al. 1999, Hewitt et al. 2001, Hewitt & Thrush 2008, Hewitt & Thrush 2007, Warwick et al. 2010). Furthermore, as most macrofauna are sessile during most of their life cycle and relatively long-lived they can provide an integrated response to environmental variation at a particular place over a relatively long time. Apart from these aspects, macrofauna are also of considerable economic value to the Dutch population, not only as a food source to humans, e.g. blue mussels *Mytilus edulis*, but also for the ecosystem services they provide, e.g. decomposition of organic matter, nutrient cycling, and regulation of nutrients (Dame et al. 1991, Dame & Prins 1997, Levin et al. 2001, Gray & Elliott 2009). Also from an ecological perspective macrofaunal species provide an important food source for migratory and non-migratory shorebirds (Zwarts 1996, Kam et al. 2004), and other species living in the Dutch Wadden Sea (Wolff 1983). In summary, macrofauna are an integral component of the Wadden Sea ecosystem, and substantial changes to the macrofauna community could induce changes that cascade through the ecosystem.

Long-term data series are powerful for detecting factors driving change, as they provide useful information on the temporal dynamics of species and thus can be used for identifying the factors driving natural variation. For example, some of the year-to-year variability (Beukema et al. 2010), and seasonal variability of macrofaunal species abundances (Beukema 1974) were untangled using the long-term data series from the Balgzand. In the Baltic Tellin *Macoma balthica* adult density fluctuations were linked to recruitment variability, whereas growth and survival were associated with food limitation, competition and predation (van der Meer et al. 2001). Such recruitment variability appears to be associated with larval survival in the water column (Bos et al. 2006). In another study, variation in the population densities of two polychaete species, were described by predator prey dynamics, as the prey population density of *Scoloplos cf. armiger* was negatively related to the density of the predator *Nephtys hombergii* (van der Meer et al. 2000). Hewitt & Thrush 2008 could identify the influence of the El Niño oscillation on macrofaunal abundances, relative to local scale environmental variables, using 13 years of monitoring data from Manukau Harbour, in New Zealand.

Understanding the natural variation of macrofauna within a sedimentary system provides a basis for estimating whether anthropogenic drivers are having effects in coastal sedimentary systems (Hewitt et al. 2001). For example, using the long-term Balgzand data, it was shown that the macrofauna abundances doubled along with the doubling of planktonic algae stocks, as a consequence of mild eutrophication (Beukema 1997). Other studies have shown that structural and functional changes of macrofauna occur when there are natural and anthropogenic sedimentation events (Turk & Risk 1981, Peterson 1985, Johnson & Frid 1995, Smith & Kukert 1996 in Ellis et al. 2000).

Data obtained across large spatial and long-term data series, via the SIBES programme, will provide insights into whether subsidence due to gas drilling is affecting macrofaunal species distributions. We have currently analyzed three years of data (2008 to 2010, this report), and have started to process data from the fourth year (2011). In 2012 the monitoring program on subsidence by gas production will be evaluated by combining all ecological data collected over the period 2008-2011. The evaluation report will be published in May 2013.

## **5. AIMS**

In this report we will examine the most recently analysed SIBES data from 2010, as well as previous data (2008 and 2009), with respect to the areas of predicted tidal-flat subsidence.

First, we will compare community attributes of the macrofauna at the predicted subsidence areas versus the remainder of the Wadden Sea.

Second, we will compare the density responses of individual species responses in the areas of subsidence versus the remainder of the Wadden Sea.

## **6. METHODS**

### **Field sampling**

Long-term monitoring programmes aim to measure the change in macrofaunal species abundance across an area over time. It is well known that the sampling design for such programmes is key to obtaining an accurate estimation of annual abundance estimates, and other associated changes (van der Meer 1997, Hewitt & Thrush 2007). Thus prior to implementing SIBES, the best sampling design for monitoring macrofauna at large temporal and spatial scales was identified given the goals of SIBES (Bijleveld et al. 2012). This sampling design allows for the estimation of spatial processes at distances of less than 500 m but still maintains the large-scale sampling overview, and thus should provide the ability to tease apart human from environmental drivers of species distributions.

The sampling design encompasses the entire intertidal Dutch Wadden Sea, with sampling at 500 m intervals and 10% random sample points (see Figure 1). From 2009 onwards, additional sampling points were added to the basic SIBES sampling design to (1) incorporate the Ems Dollard region and (2) to increase

the sampling resolution in the areas of Oost Ameland and Moddergat (see blue dots in Figure 2).

Sampling was completed on an annual basis in summer from June to about October, depending on weather. The NIOZ research vessel, *Navicula*, was used as a platform to access the sample areas across the Wadden Sea. During low tide we sampled by foot. In areas where it was too deep or muddy to access by foot, small inflatable boats were used to sample the SIBES sites. Sampling locations, ~4500 in total, were found with a handheld GPS (WGS84 as map datum). At each site sampled by foot, a single core of 0.0175 m<sup>2</sup> was taken to a depth of ~25 cm. By boat, two cores of 0.018 m<sup>2</sup> were taken to a depth of ~25 cm.

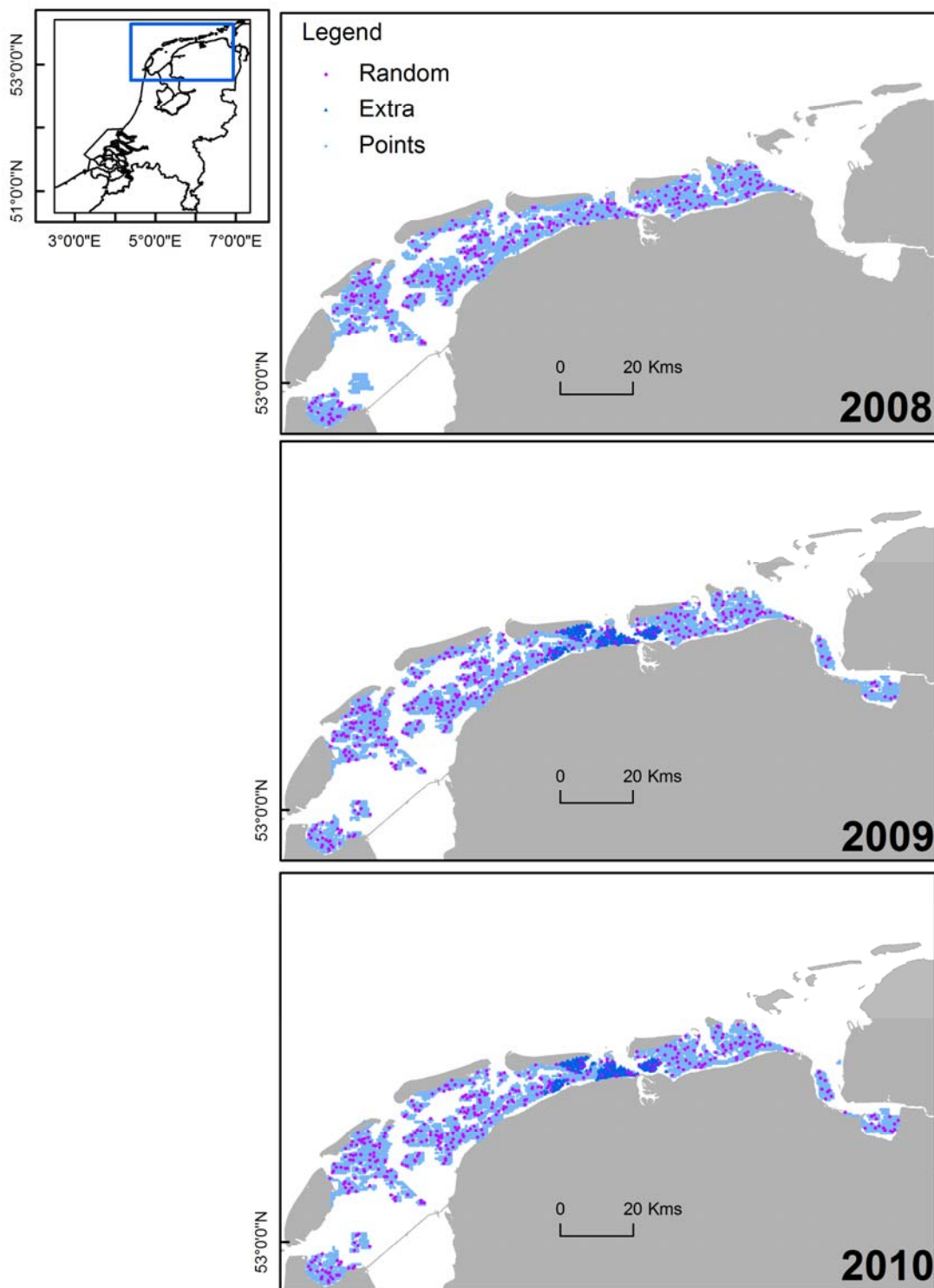
All macrobenthos samples were sieved on a 1 mm mesh in the field. After sieving, bivalves were separated from the other macrobenthic species for later analysis in the laboratory. The bivalve samples were frozen, whereas the remaining macrobenthic species were preserved using a 4% formalin solution.

Sediment samples were taken using a centrifuge tube to a depth of 4 cm and then frozen at -20°C. The sediment samples were taken at all sample points in 2009 and 2010, i.e. every 500 m and at the random sample points, and at 1 km intervals in 2008.

## Laboratory analysis

All shellfish were identified to species level (Hayward & Ryland 1995) and measured for their maximum length using digital callipers (precision of 0.01 mm). An ash free dry mass (AFDM) was then determined for each individual greater than 8 mm in size or for multiple individuals together when their size was smaller than 8 mm in length. To determine the AFDM, the wet meat of an organism is placed into a crucible and then dried at 60°C for 48 hours. Once dried, the dry sample goes into a desiccator to cool prior to weighing to an accuracy of four decimal places (Mettler Toledo XS204). The dried organism is then put into an incinerator where the organic matter is burnt, so that only the ashed matter remains (560°C for 5 hours). Once incinerated, the ashed sample goes into a desiccator to cool prior to weighing the ashed mass to an accuracy of four decimal places.

**Figure 1.** SIBES sampling sites across the Dutch Wadden Sea (blue), with additional points (Extra) around the Oost Ameland and Moddergat region denoted in dark blue and random sample points denoted in purple. In 2008, 2009 and 2010 we sampled 4307, 4733, 4528 sample points, respectively.



All other smaller organisms, predominantly crustaceans and worms, were identified to the highest taxonomic level possible; hereafter named operational taxonomic units (OTUs). In the first instance, these samples were stained using rose Bengal dye (C.A.S. no. 632-68-8) for 24 hours. These samples were then flushed with fresh water for 10-20 minutes over a 0.5 mm sieve to wash away the remaining formalin. The organisms were then carefully placed on a petridish for identification and counting under a binocular microscope (8 - 40 x magnification). Identification of the macrobenthic species was completed according to the ISO guidelines (ISO 9001:2008 nr. K57663/01); and classified according to Hartmann-Schröder (1996) and Hayward and Ryland (1995). For protocols, see Appendix 10. Specifically, worms and amphipods were identified to either a genus or species level, whereas oligochaetes were identified to a class level. We currently recognize that there are cryptic species in the Wadden Sea, however, without further taxonomic and genetic analyses we cannot discriminate between these species (Luttikhuisen et al. 2011). Once samples were counted and identified, the AFDM of either individuals or multiple individuals of the same species were determined.

## **Sediment analysis**

Prior to analysis the samples were freeze-dried for up to 96 hours prior to analysis and then homogenized with a mortar and pestle. Homogenized samples were weighed to within 0.5 to 5 grams, depending on the observed estimated grain size, and placed into 13 ml Polypropylene Auto-sampler tubes with degassed Reversed Osmosis water. The sediment samples were analysed using a "biological" approach, meaning that after sieving over a mesh size of 2 mm, the calcium carbonate, including shell fragments and organic matter, were not removed from the samples. Samples were then shaken vigorously with a vortex mixer for 30 seconds before their grain size was determined using a coulter counter. The coulter counter then uses laser diffraction and Polarization Intensity Differential Scattering technology to estimate grain sizes (Coulter LS 13 320, optical module "gray", grain sizes from 0.04 – 2000  $\mu\text{m}$  in 126 size classes). For protocols, see Appendix 11.

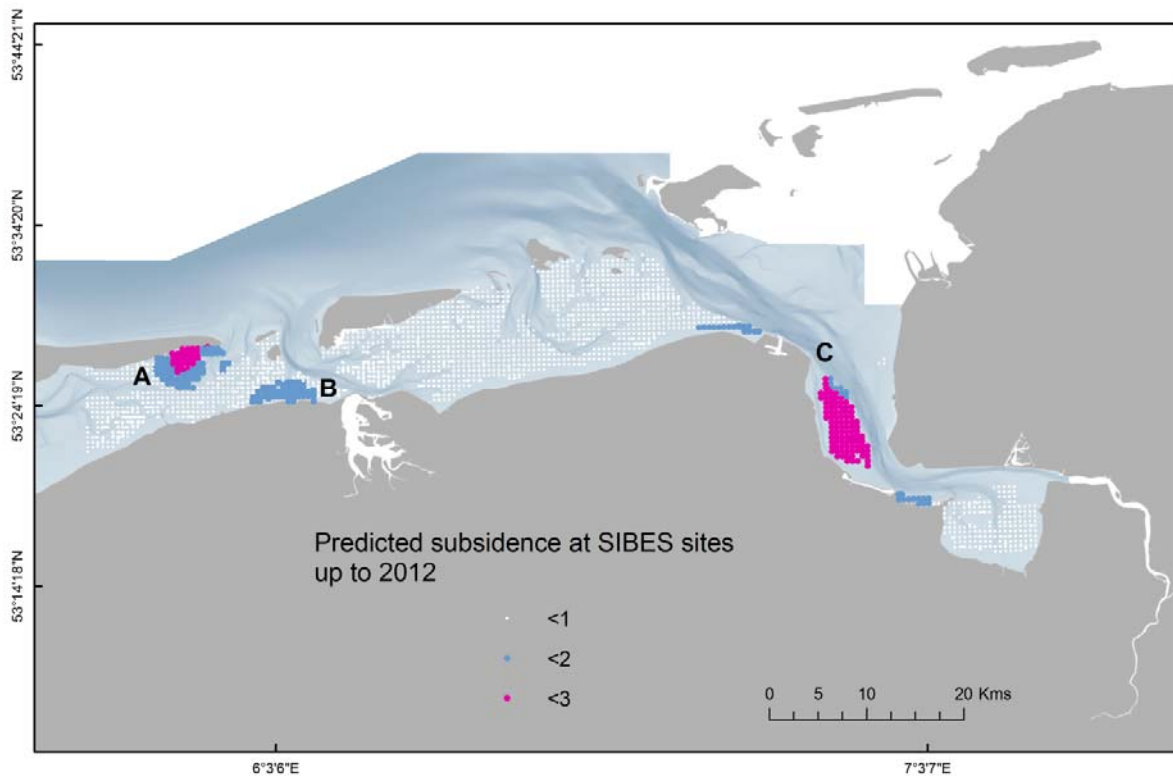
Currently the sediment samples from 2008 and 2010 have been analysed, and the 2009 samples are in the process of being analysed.



## Predicted subsidence and SIBES

There are several gas extraction regions located in close proximity to the Dutch Wadden Sea. These include "Ameland-Oost" (Figure 2), which has been in operation since 2006, the "Moddergat-Lauwersoog-Vierhuizen" region, which has been in operation since 2007 and spans two regions of the Wadden Sea, the northern Lauwersoog region and the East Groningen region of the Wadden Sea (Figure 2). In this report we will use predictions of land subsidence up to 2012 for our sampling sites (see Figure 2), as determined by a model from the NAM.

**Figure 2.** Predicted subsidence at the SIBES sampling points near the three areas of gas extraction in the eastern Dutch Wadden Sea: A – Oost Ameland, B – Moddergat and C- Oost Groningen. The shaded background indicates the Wadden Sea bathymetry (RIKZ, 2009). Depth data is collected by the Rijkswaterstaat (RIKZ), using a dense grid of sampling points ('vaklodingen' 2008 data, methods in Perluka et al. 2006) and converted into an elevation map by NAM (EP200905260877).



## 7. ANALYSIS

### Community patterns

To identify general trends in community patterns in the areas of land subsidence versus outside of these areas, for all years we calculated total macrofauna density per point (nrs/m<sup>2</sup>), the number of macrofaunal species in a sample core (alpha diversity) and the total biomass of macrofauna in a sample (g AFDM/m<sup>2</sup>). Using the predictions of subsidence as provided by the NAM, we classified our sample sites either as Oost-Ameland (Ame), Moddergat (Mod), Oost Groningen (OG) or remainder of the Wadden Sea (Ws, see Figure 2).

### Individual species

#### Generalized linear model analysis – raw data

Using the statistical approach, as described by Aarts (2010, 2011), we examined whether we could detect changes in the operational taxonomic unit (OTU) densities from the SIBES data of 2010 with respect to the predicted areas of subsidence; “in” indicating those sample sites inside the aforementioned gas regions and “out” indicating the sites outside of this region. The modelling outcomes are presented in two stages. In the first, we use the true data to test whether there are significant differences between densities of an operational taxonomic unit (OTU) “in” or “out” a region. But due to the inherent spatial variability of the Wadden Sea, and thus the chance that a significant difference between areas is more general across the Wadden Sea, a second approach (Monte Carlo simulations) is required to test whether a significant effect is indicative that the areas of predicted subsidence really differ compared to other areas in the Wadden Sea.

To examine whether changes in mean OTU densities differed significantly inside the gas drilling areas versus outside, we ran a generalized linear model for 2010 alone, with quasi-Poisson distributed errors:

$$y \sim G \quad \text{equation 1}$$

where  $y$  is the density of an OTU (nrs/m<sup>2</sup>) and  $G$  is the factor “in” versus “out”.

We tested whether changes in the density of an OTU were occurring: (a) for all areas, (b) for the Oost-Ameland region alone, (c) for the Moddergat region alone or (d) for the Oost Groningen region alone. For all models, we had a criteria that at least eight individuals should be found within the “in” and “out” regions for a model to run.

#### Generalized linear model analysis – simulations

To run the Monte Carlo simulations and thus to test whether the results in the predicted subsidence area differed relative to the rest of the Wadden Sea, 1000 randomly simulated “in” and “out” data were tested using the same models (equation 1, also see Appendix 5). Sampling regions were selected with replacement and were chosen by randomly selecting a single random point within



the SIBES data set and taking the closest points within the region of this single point. The number of randomly selected sample points representing the "in" region matched the number of points sampled in the areas of predicted subsidence, i.e. Oost Ameland, Moddergat and Oost Groningen. Similarly, to the previous models the criteria for a model to run was at least eight individuals recorded within the "in" and "out" regions.

By running the GLM model 1000 times on random subsets of the SIBES data outside of the gas drilling areas, we were able to estimate an F-distribution from the model runs for a particular OTU. This F-distribution could then be compared with the true GLM model F-value (above) for the same OTU to determine whether the previously determined significant value ( $p < 0.01$ ) is rare in the simulations, and thus indicates a significant probability that the areas of subsidence differ relative to the other areas of the Wadden Sea.

To examine these results within the context of the data collected in 2008 and 2009, we examined the densities of the OTUs identified as significantly different by the models in more detail. Specifically, we compared the densities of these OTUs in the predicted subsidence regions versus the remaining Wadden Sea using boxplots and mapped distributions for all three sampling years. Maps were drawn in ArcGIS 9.3.

## 8. RESULTS

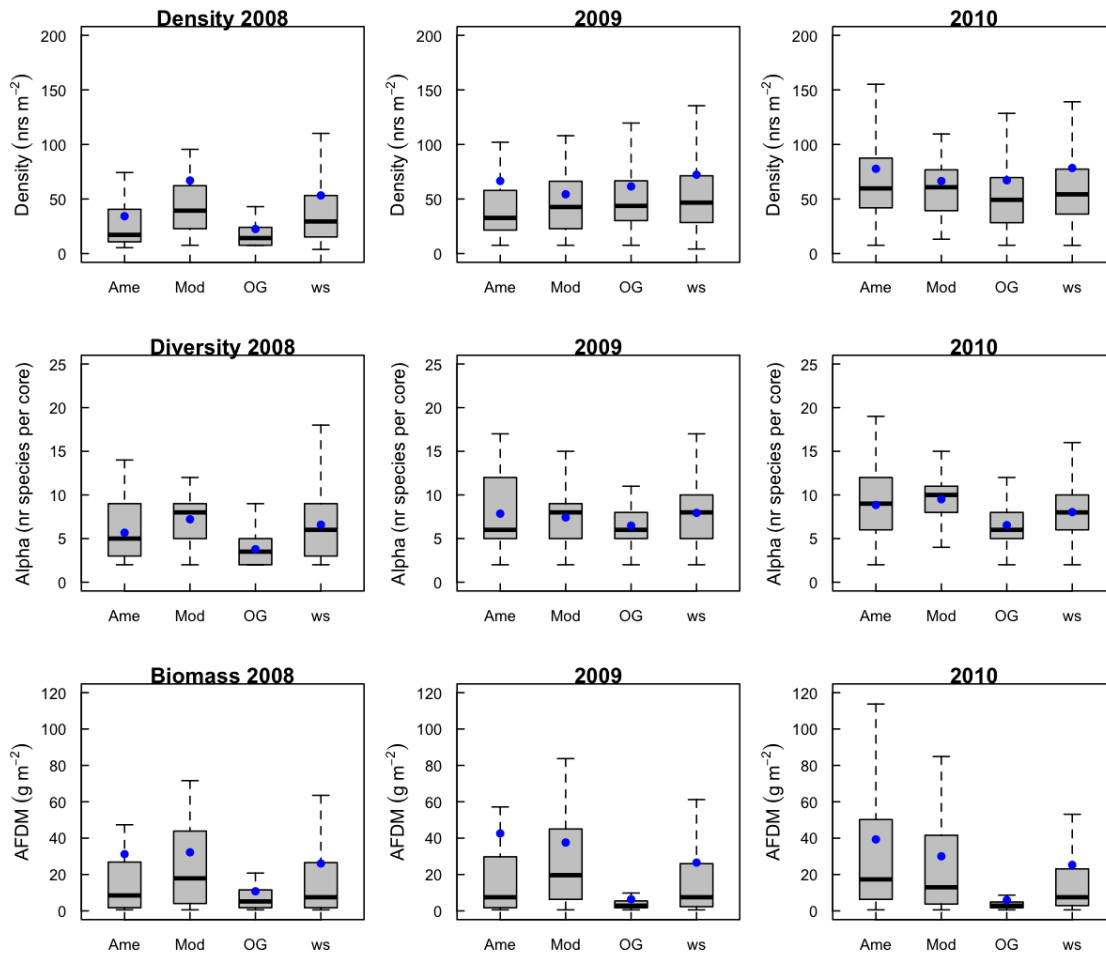
### Community patterns

Densities of total macrofauna in a sample (nrs/m<sup>2</sup>) showed that on average differences in total macrofaunal densities were minimal between the predicted subsidence areas versus the remainder of the Wadden Sea in 2009 and 2010 (Figure 3), and tended to be lowest at Oost Groningen and Ameland in 2009. The mapped total densities of macrofauna highlighted temporal and spatial differences from 2008 to 2010 (Figure 4). Notably, in 2008 the highest macrofaunal densities were more spatially restricted compared to the highest recorded macrofaunal densities in 2009 and 2010. For all three years, an interesting spatial pattern reoccurs. Highest densities of macrofauna occur along the Frisian coastline, near Vlieland, Balgzand and in between Schiermonnikoog and the mainland (Figure 4).

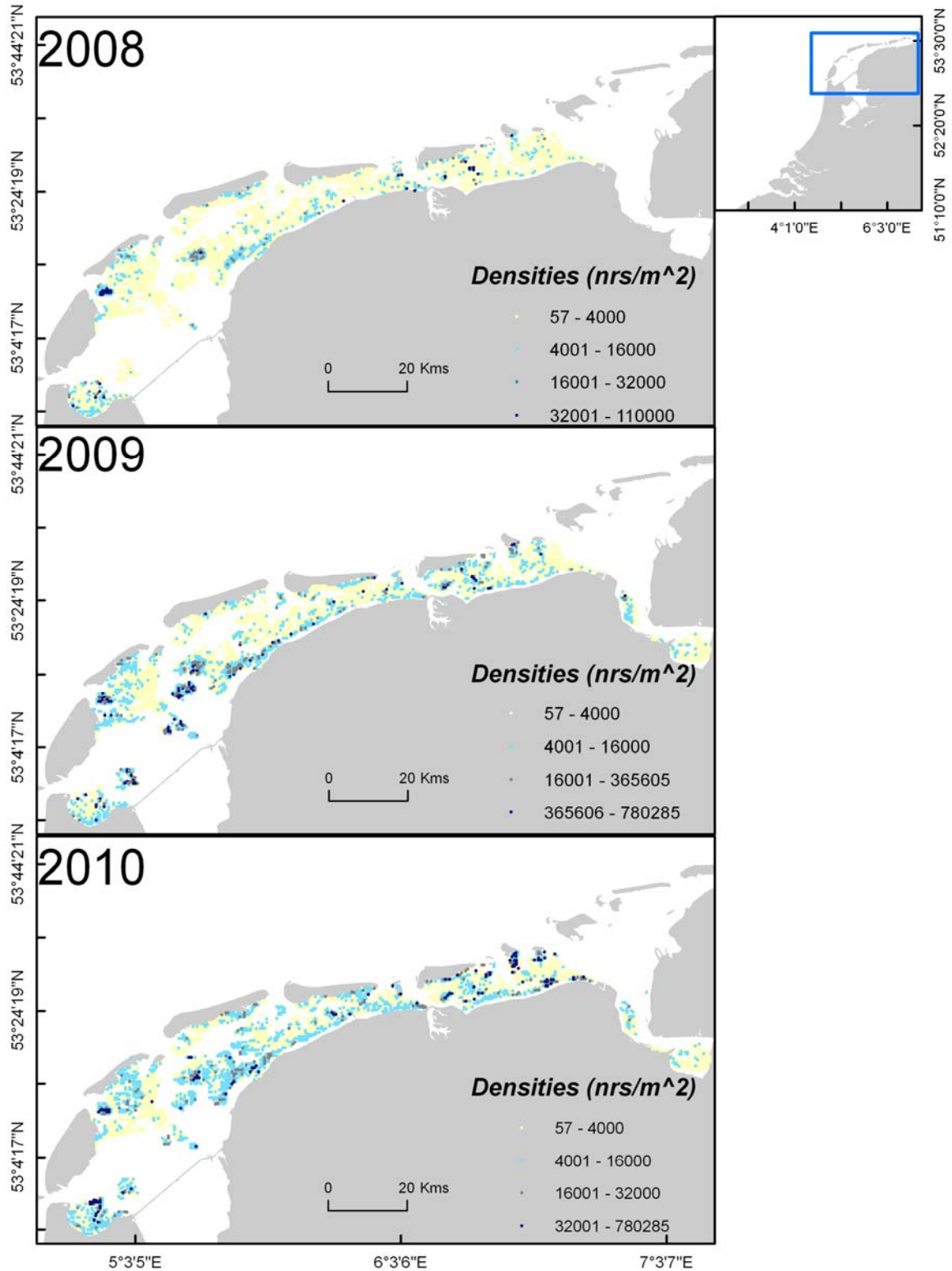
The total number of OTUs counted in a sample point (alpha diversity, Figure 3), showed that Oost Groningen consistently had a lower number of species relative to the remaining areas of predicted subsidence and the Wadden Sea (~5 versus ~8 per core) for all years. Furthermore, a comparison of the mapped alpha diversity, based on all operational taxonomic units (OTUs), at the SIBES sample points showed interesting parallels between years. Alpha diversity appeared to be highest around northern Texel and Vlieland and near Griend and low in the Ems Dollard (Figure 5). Similarly to the density observations (boxplots and maps, Figures 3 and 4), mapped alpha diversity was lowest in 2008 compared to 2009 and 2010. Total OTU richness for the entire Wadden Sea (Gamma diversity) was also lowest for 2008 (Gamma diversity: 86 OTUs) compared to the species richness estimated in 2009 and 2010 (Gamma diversity 2009: 100 and Gamma diversity 2010: 93 OTUs).

A comparison of the areas predicted to subside versus the remainder of the Wadden Sea showed that the total biomass of all macrofauna within a point (g AFDM/m<sup>2</sup>) was consistently lowest in the Wadden Sea area near Oost Groningen for all three years, similar to the alpha diversity estimates (Figure 3). There was also a slight tendency for biomass to be higher at Moddergat in 2008 and 2009 compared to the other sites (Figure 3). In 2010, the greatest variation in biomass was encountered at Oost Ameland (Figure 3). Similar to the mapped densities of all macrofauna, biomass tended to be highest along the Frisian coastline, near Vlieland, Balgzand and in between Schiermonnikoog and the mainland (Figure 6). The Ems Dollard region had the lowest biomass. Mapped biomass appeared to be highest in 2009 relative to the other two years.

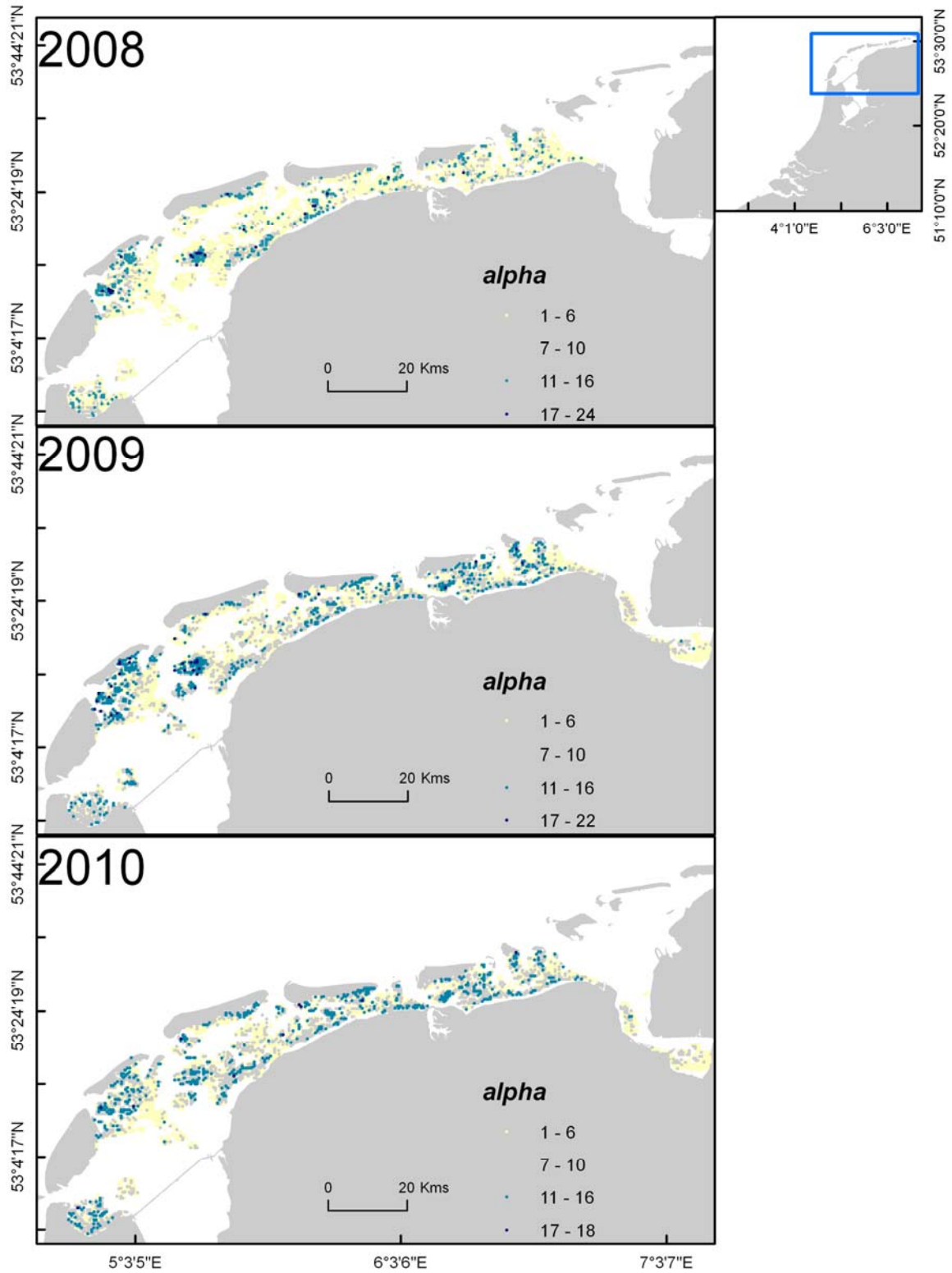
**Figure 3.** A comparison of the data distributions of total density (nrs/m<sup>2</sup>, square root transformed), richness and biomass (g AFDM/m<sup>2</sup>) within a sample at the predicted subsidence areas versus the remaining Wadden Sea. Boxplots represent the median value (solid middle line) and the upper and lower quartile (upper and lower hinges of the box), and the whiskers represent the range of values around the box. The dots (blue) indicate the mean values. The location names are abbreviated Oost Ameland (Ame), Moddergat (Mod), Oost Groningen (OG) and the remaining Wadden Sea (Ws).



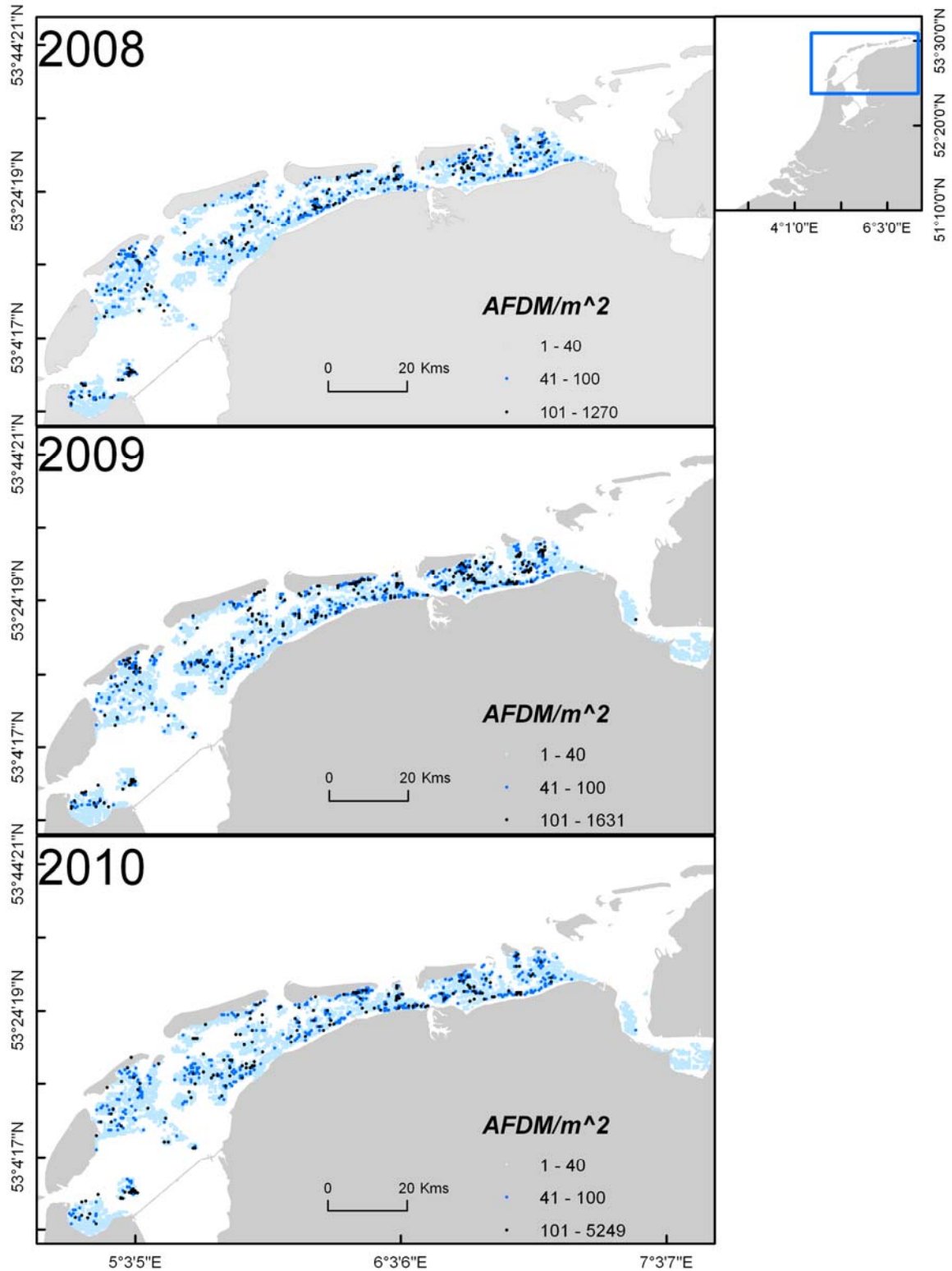
**Figure 4.** Densities of macrofauna (numbers per square metre, nrs/m<sup>2</sup>) at the SIBES sample sites from 2008 to 2010. Darker colours indicate higher densities.



**Figure 5.** Number of operational taxonomic units (OTUs) or alpha diversity, at each sample point from the SIBES survey for all years. Darker colours highlight areas of higher alpha diversity.



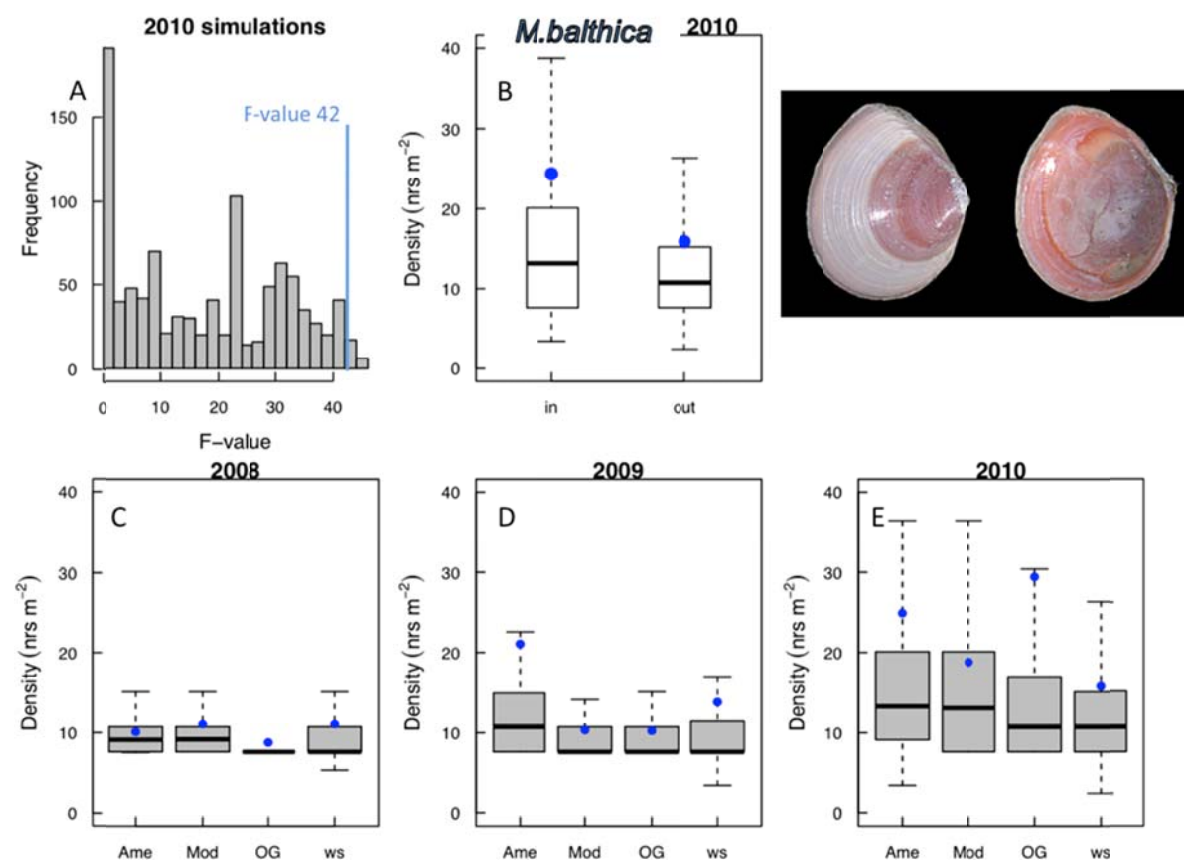
**Figure 6.** Total biomass (g AFDM/m<sup>2</sup>) at the SIBES sample points for 2008 to 2010. Darker colours indicate areas of highest biomass.



## Individual species

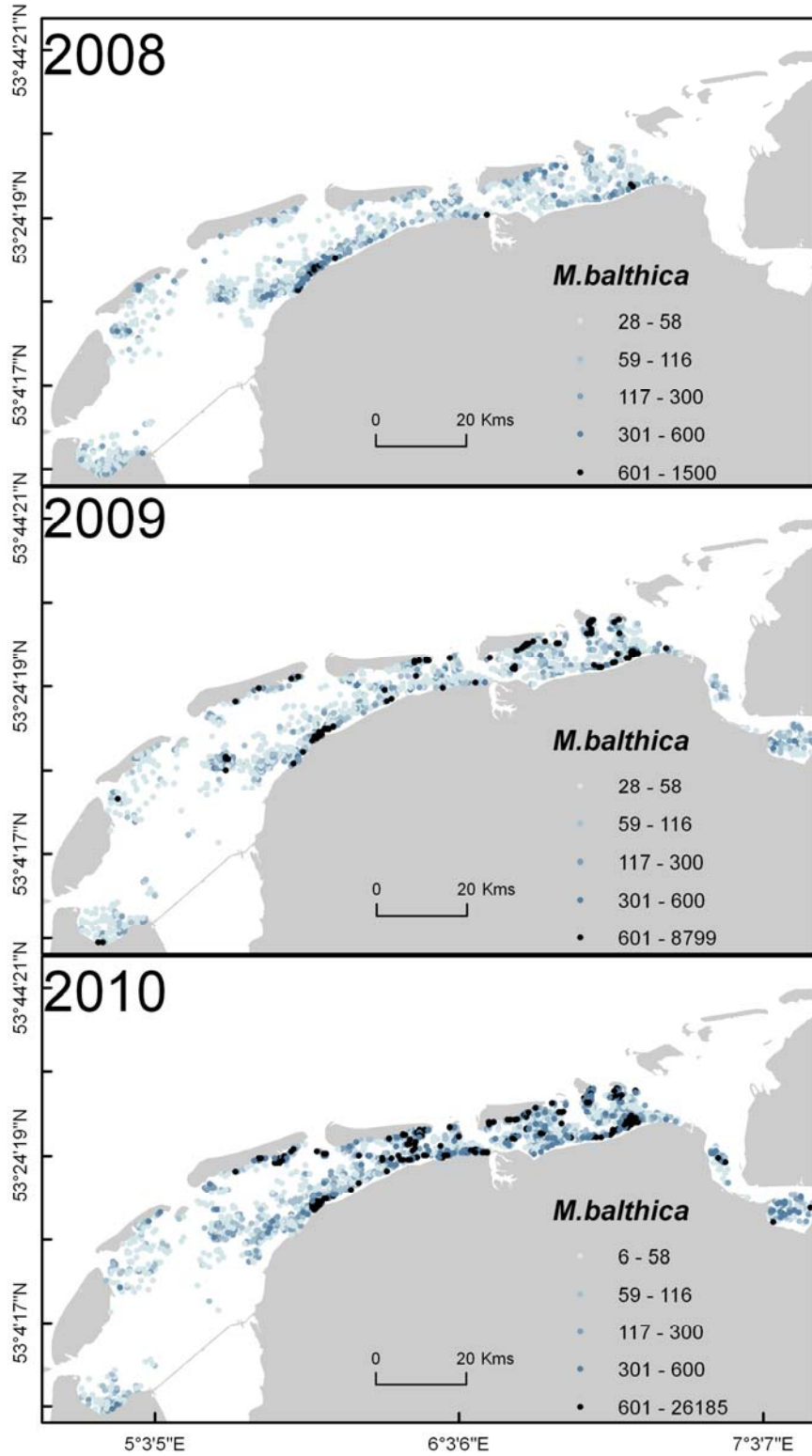
Operational taxonomic unit (OTU) results from the Generalised Linear models (GLM raw data) can be found in Appendix 1. Here, significant OTU results from the GLM models are presented where all areas of predicted subsidence "in" (Oost Ameland, Moddergat and Oost Groningen) are compared with the remainder of the Wadden Sea "out".

**Figure 7.** The histogram (A) provides a comparison between the F-value from the raw data model (line) versus the F-values from the simulated GLMs (bars). In the case of *Macoma balthica*, the true F-value (42) occurs infrequently in the simulated models, indicating the densities in the predicted subsidence regions ("in") differ relative to the remainder of the Wadden Sea ("out"). Boxplots show the data distribution of *Macoma balthica* densities (nrs/m<sup>2</sup>, square root transformed) in the predicted areas of subsidence versus the remainder of the Wadden Sea. In the first boxplot (B), the data used in the GLM model is represented: "in" versus "out". In the lower boxplots (C-E), densities of *M.balthica* at the three areas of predicted subsidence are compared with the remainder of the Wadden Sea for the years of 2008, 2009 and 2010. The location names are abbreviated Oost Ameland (Ame), Moddergat (Mod), Oost Groningen (OG) and the remaining Wadden Sea (Ws). In all boxplots the dot (blue) gives the mean value. Photo by M.Mulder.





**Figure 8.** Densities (nrs/m<sup>2</sup>) of The Baltic Tellin *Macoma balthica* across the Dutch Wadden Sea in the three survey years. Darker colours indicate higher densities. Note that the Ems Dollard was not sampled in 2008.





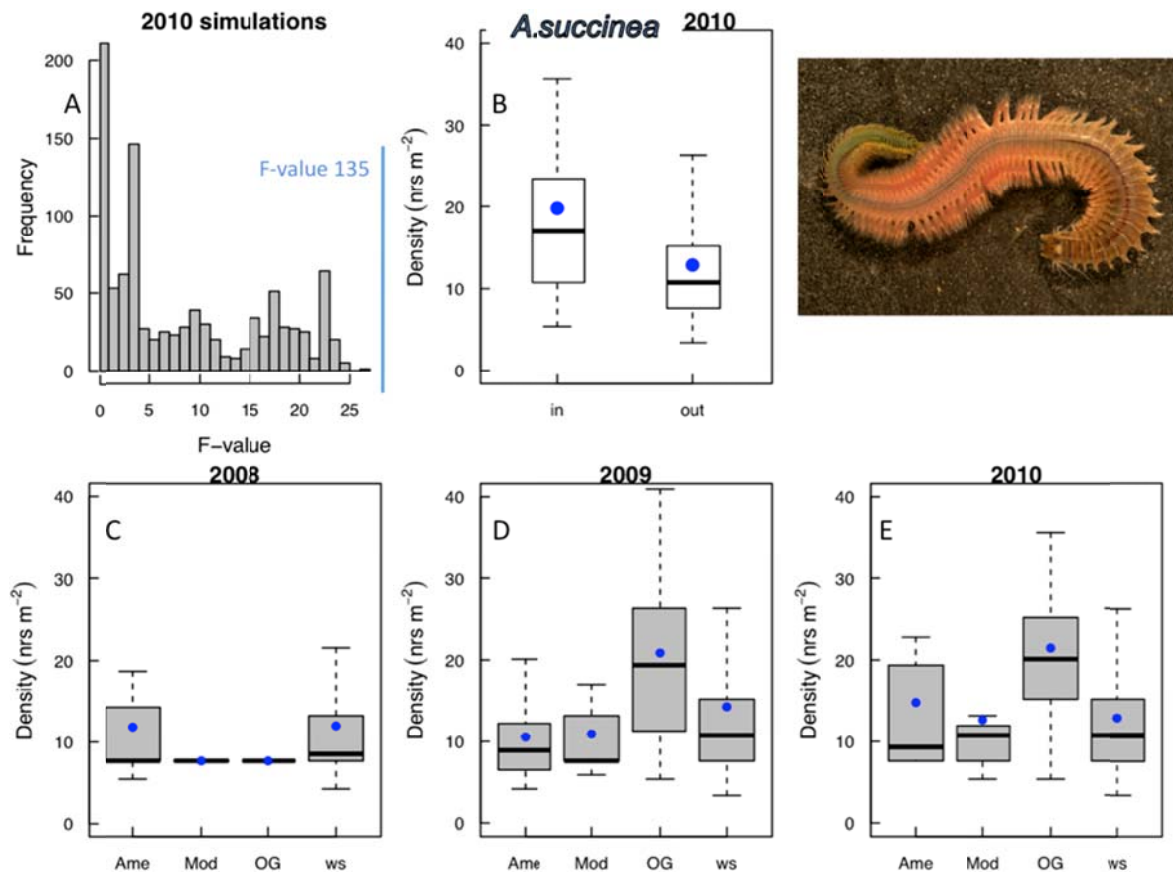
The models identified that three OTUs had significantly different densities either "in" or "out" the subsidence regions of the Wadden Sea in 2010. The OTUs that had a positive density increase in the predicted subsidence regions included the Baltic Tellin *Macoma balthica* (Appendix 1, est 1.13, F-value = 42,  $p < 0.001$ ), the polychaete worm *Alitta succinea* (est 1.84, F-value = 137,  $p < 0.001$ ) and the razor shell *Ensis directus* (Appendix 1, est 1.25, F-value = 25,  $p < 0.001$ ). A comparison of these results with the simulated GLM model results indicated that the "in" regions differed relative to the remainder of the Wadden Sea (see histograms of simulated F-values in Figures 7, 9, 11).

OTUs that had a negative density response included the polychaete worm *Scoloplos cf. armiger* (Appendix 1, est -0.57, F-value = 25,  $p < 0.001$ ) and the capitellid worm *Capitella capitata* (Appendix 1, est -0.84, F-value = 12,  $p < 0.001$ ). However, the GLM simulations indicated that these results were not significant, i.e. that these density decreases were not something exceptional for the predicted subsidence regions but also occurred when simulated in other areas of the Wadden Sea (Figures 13 and 15, see histograms and lines representing the GLM-raw data F-values).

In the case of *M. balthica*, densities in the predicted subsidence areas "in" were significantly higher than densities in the remainder of the Wadden Sea "out" in 2010 (Appendix 1, Figure 7). An examination of the density data showed that mean densities in the subsidence regions were generally higher and showed a greater range of variation than the remaining Wadden Sea. A more detailed comparison of *M. balthica* densities for all three years showed that Ameland, Moddergat and Oost Groningen all had higher mean densities and higher maximum values than found in the remainder of the Wadden Sea (Figure 7). Notably, mean densities of *M. balthica* were lowest in 2008 but increased in 2009 and 2010. In 2009 Oost Ameland had the highest mean densities of *M. balthica* relative to the remainder of the Wadden Sea.

The mapped distributions of *M. balthica* showed that the areas with the highest densities occurred along the Frisian coastline and between Ameland and Schiermonnikoog in all three surveyed years. An observational comparison with the sediment data showed that these are some of the muddiest areas of the Wadden Sea (Figure 17). Lowest densities of *M. balthica* were found in the Western Dutch Wadden Sea. Although there is a trend for *M. balthica* to be found in highest densities at similar locations between years, it is notable that there is considerable variation in the densities between years, and in the patch size of such high-density areas. For example, a comparison between the years shows that densities were lowest in 2008 and highest in 2010 and that patch sizes were larger in 2010.

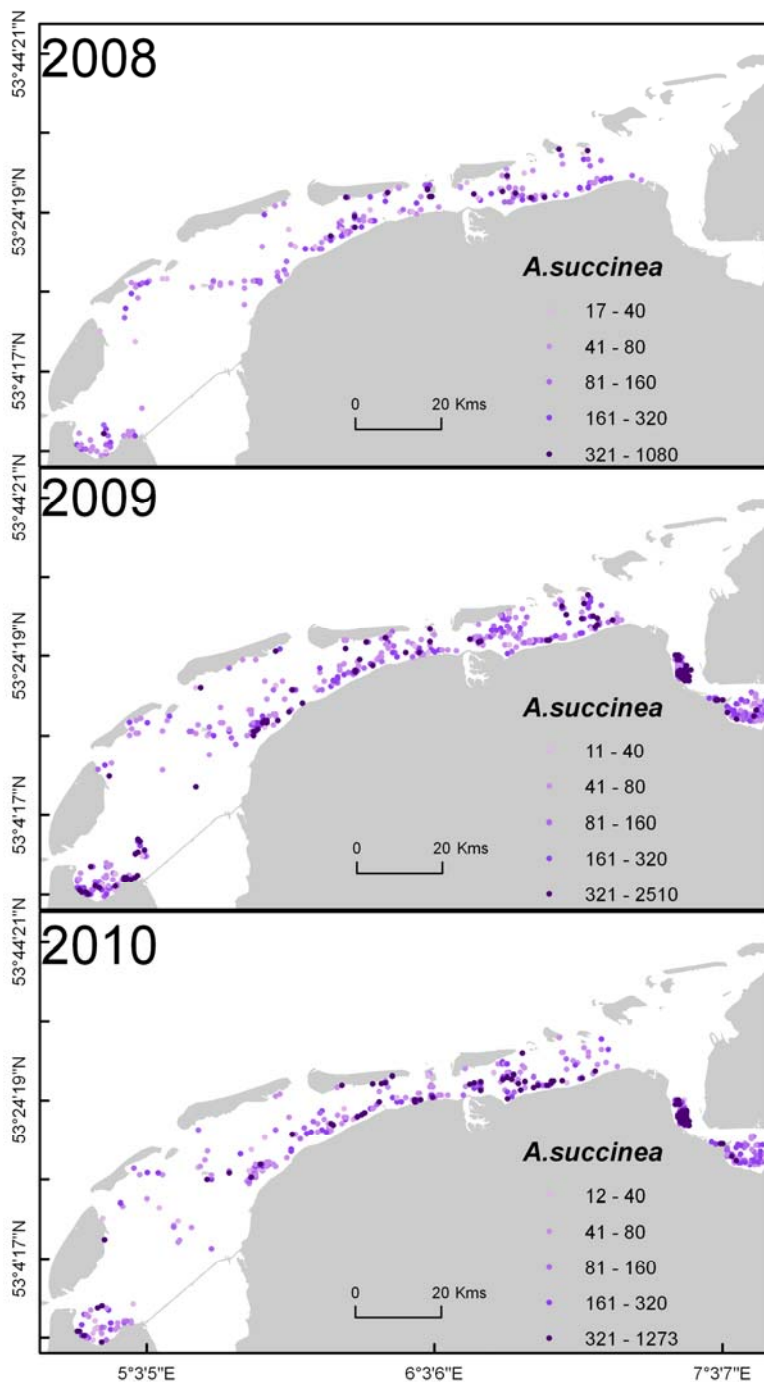
**Figure 9** The histogram (A) provides a comparison between the F-value from the raw data model (line) versus the F-values from the simulated GLMs (bars). For *Alitta succinea*, the true F-value (135) does not occur in the simulated models, indicating the densities in the predicted subsidence regions ("in") differ relative to the remainder of the Wadden Sea ("out"). Boxplots show the data distribution of *Alitta succinea* densities (nrs/m<sup>2</sup>, square root transformed) in the predicted areas of subsidence versus the remainder of the Wadden Sea. In the first boxplot (B) the data used in the GLM model is represented: "in" versus "out". Here, the F-value is rare in the simulations indicating the densities in the predicted subsidence regions differ relative to the remainder of the Wadden Sea. In the lower boxplots (C-E), densities of *A. succinea* at the three areas of predicted subsidence are compared with the remainder of the Wadden Sea for the years of 2008, 2009 and 2010. The location names are abbreviated Oost Ameland (Ame), Moddergat (Mod), Oost Groningen (OG) and the remaining Wadden Sea (Ws). In all boxplots the dot (blue) gives the mean value. Photo by M.Mulder.



In the case of the polychaete species *A. succinea*, a significant response of the "in" versus "out" was observed using the GLM simulations for 2010 (Appendix 1, Figure 9). The very high F-value indicated that this species has much higher densities in the areas of predicted land subsidence versus the remainder of the Wadden Sea (F-value = 135). A comparison of the raw data "in" versus "out" used for this analysis in the boxplots, also shows that the median values and the range of values were higher in the predicted subsidence areas (Figure 9). A comparison of the densities of this species between the three predicted

subsidence regions in 2010 showed that highest densities were observed in the Oost Groningen region, whereas lowest densities were observed in Moddergat. Furthermore, a comparison between the three survey years showed that there was considerable variation in the densities of this species over time. Densities were lowest in 2010, but increased in 2009 and 2010. In both 2009 and 2010 densities were highest in Oost Groningen. The other areas are relatively similar to each other.

**Figure 10** Densities (nrs/m<sup>2</sup>) of the polychaete *Alitta succinea* across the Dutch Wadden Sea in the three survey years. Darker colours indicate higher densities. Note that the Ems Dollard was not sampled in 2008.



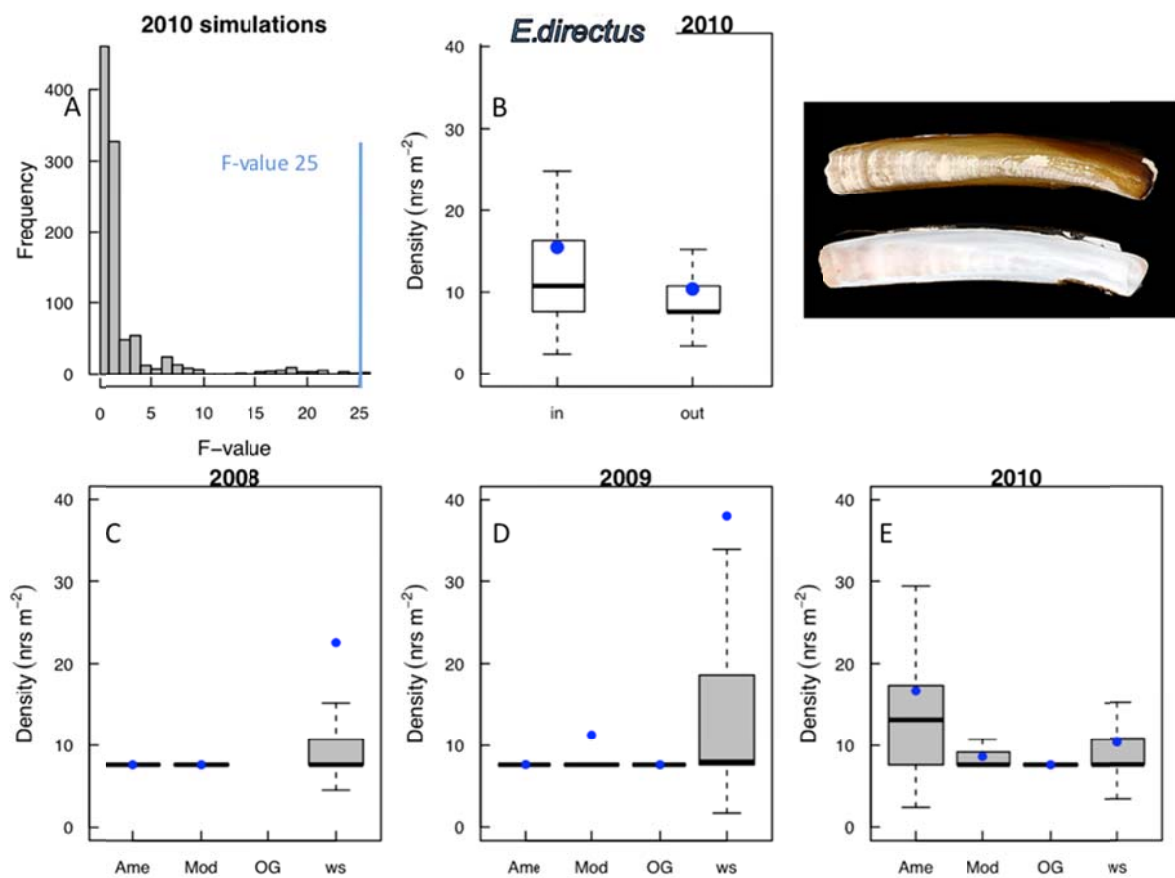
A comparison of the mapped distributions of *A. succinea* showed that densities of this polychaete species were highest in the Oost Groningen area, compared to the remainder of the Wadden Sea. Consequently, the significant result found in the GLM analysis should be interpreted with caution, as this result reflects the distribution of this species rather than a subsidence effect (Figure 10). This species is also relatively common in the Balgzand area and along the Frisian coastline, but is very uncommon across the remainder of the Western Wadden Sea. Areas where this species was most common were generally muddy (Figure 17). A comparison between the three survey years showed that this species had the highest density distributions in 2009 and 2010 and lowest densities in 2008.

Another species that showed significantly higher densities (Appendix 1, F-values 25 from 1000 simulations, Figure 11) in the predicted subsidence areas than in the remainder of the Wadden Sea was the razor shell *Ensis directus*. A comparison of the density distributions of this species both "in" and "out" the predicted subsidence regions showed that in 2010 this species had a higher mean and range of density values in the predicted subsidence regions relative to the remainder of the Wadden Sea. A closer examination of the density distributions of this species in 2010 showed that densities were particularly high in the Oost Ameland region (Figure 11). By contrast, densities were relatively similar between the other predicted subsidence regions and the remainder of the Wadden Sea in 2010. A comparison of *E. directus* densities at the predicted subsidence regions and the remainder of the Wadden Sea showed that the high densities observed at Oost Ameland in 2010 were an exception, as densities of *E. directus* were generally low at the predicted subsidence areas but higher in the remainder of the Wadden Sea in previous years (Figure 11). A comparison of densities between years showed that in 2009 mean densities were highest measured across all years for the remainder of the Wadden Sea (Ws).

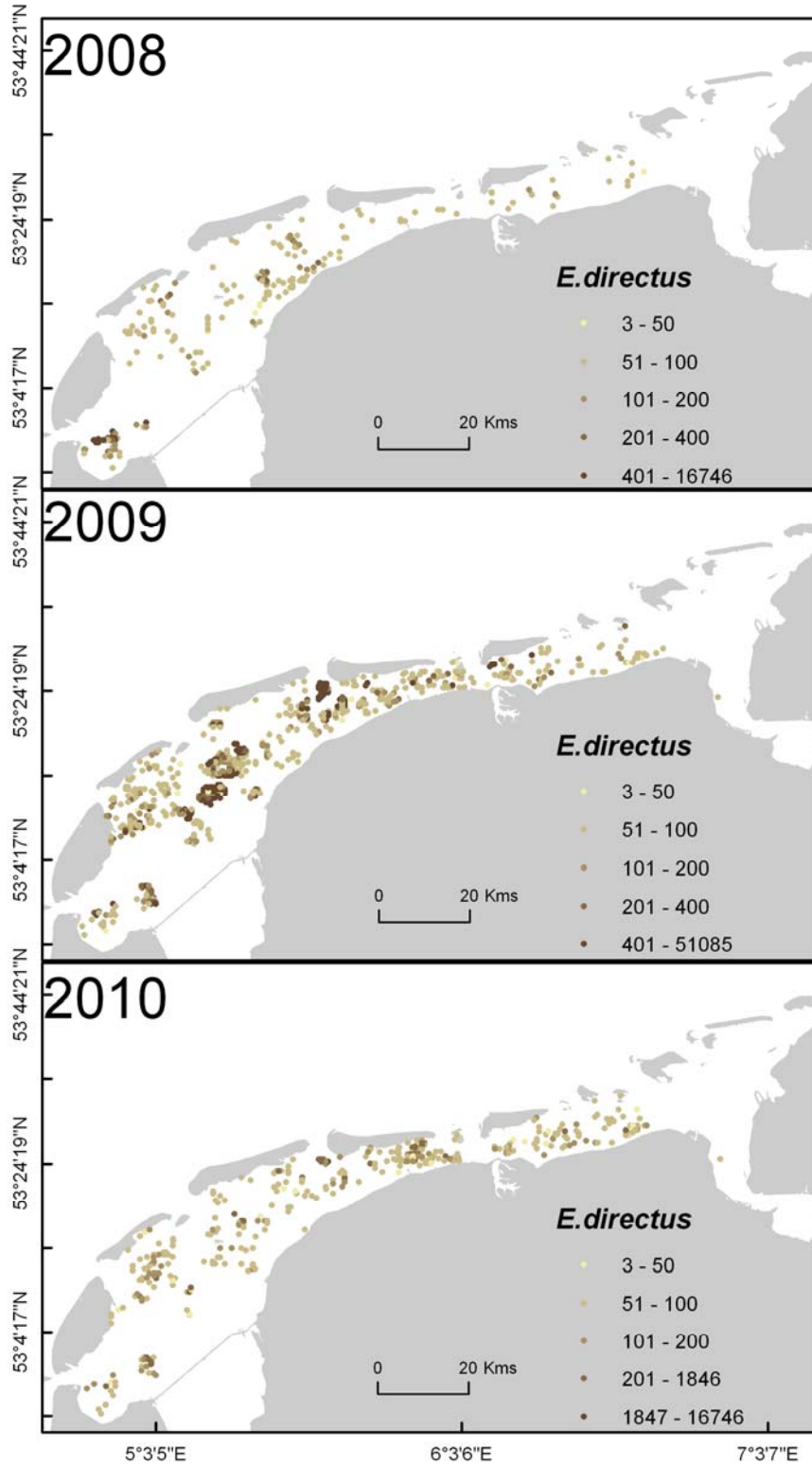
The mapped distributions of *E. directus* in 2010 showed that densities were indeed highest in Oost Ameland and relatively low in the remaining areas of the Wadden Sea (Figure 12). The mapped comparisons of *E. directus* densities between years showed that densities were lowest in 2008 and 2010 and relatively highest in 2009. In 2008, high densities of *E. directus* were observed at the edge of Balgzand, near the Marsdiep channel. In 2009, high densities of *E. directus* were observed through the middle reaches of the Wadden Sea. These areas are relatively sandy with median grain sizes of  $\sim 250 \mu\text{m}$  (Figure 17). Densities were generally low in the remaining areas of the Wadden Sea in all years.

By contrast with the aforementioned species, we now examine results from two species that showed a negative response in the predicted areas of subsidence (GLM raw data), but whose responses were not significantly different when compared with the remainder of the Wadden Sea (GLM simulations).

**Figure 11** The histogram (A) provides a comparison between the F-value from the raw data model (line) versus the F-values from the simulated GLMs (bars). For *Ensis directus*, the true F-value (25) occurs rarely in the simulated models, indicating the densities in the predicted subsidence regions (“in”) differ relative to the remainder of the Wadden Sea (“out”). Boxplots show the data distribution of *Ensis directus* densities (nrs/m<sup>2</sup>, square root transformed) in the predicted areas of subsidence versus the remainder of the Wadden Sea. In the first boxplot (B), the data used in the GLM model is represented: “in” versus “out”. In the lower boxplots (C-E), densities of *E. directus* at the three areas of predicted subsidence are compared with the remainder of the Wadden Sea for the years of 2008, 2009 and 2010. The location names are abbreviated Oost Ameland (Ame), Moddergat (Mod), Oost Groningen (OG) and the remaining Wadden Sea (Ws). In all boxplots the dot (blue) gives the mean value. Photo by M.Mulder.

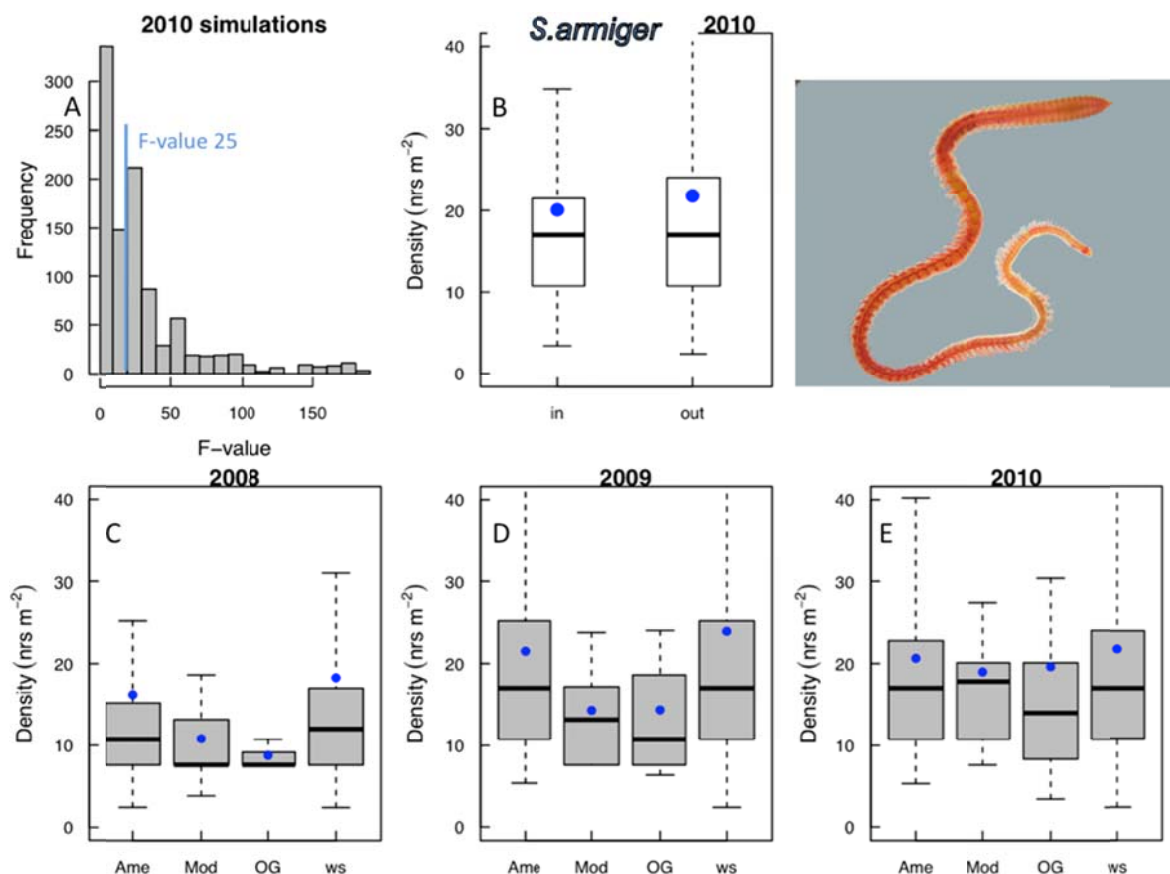


**Figure 12** Densities (nrs/m<sup>2</sup>) of the razor clam *Ensis directus* across the Dutch Wadden Sea in the three survey years. Darker colours indicate higher densities. Note that the Ems Dollard was not sampled in 2008.



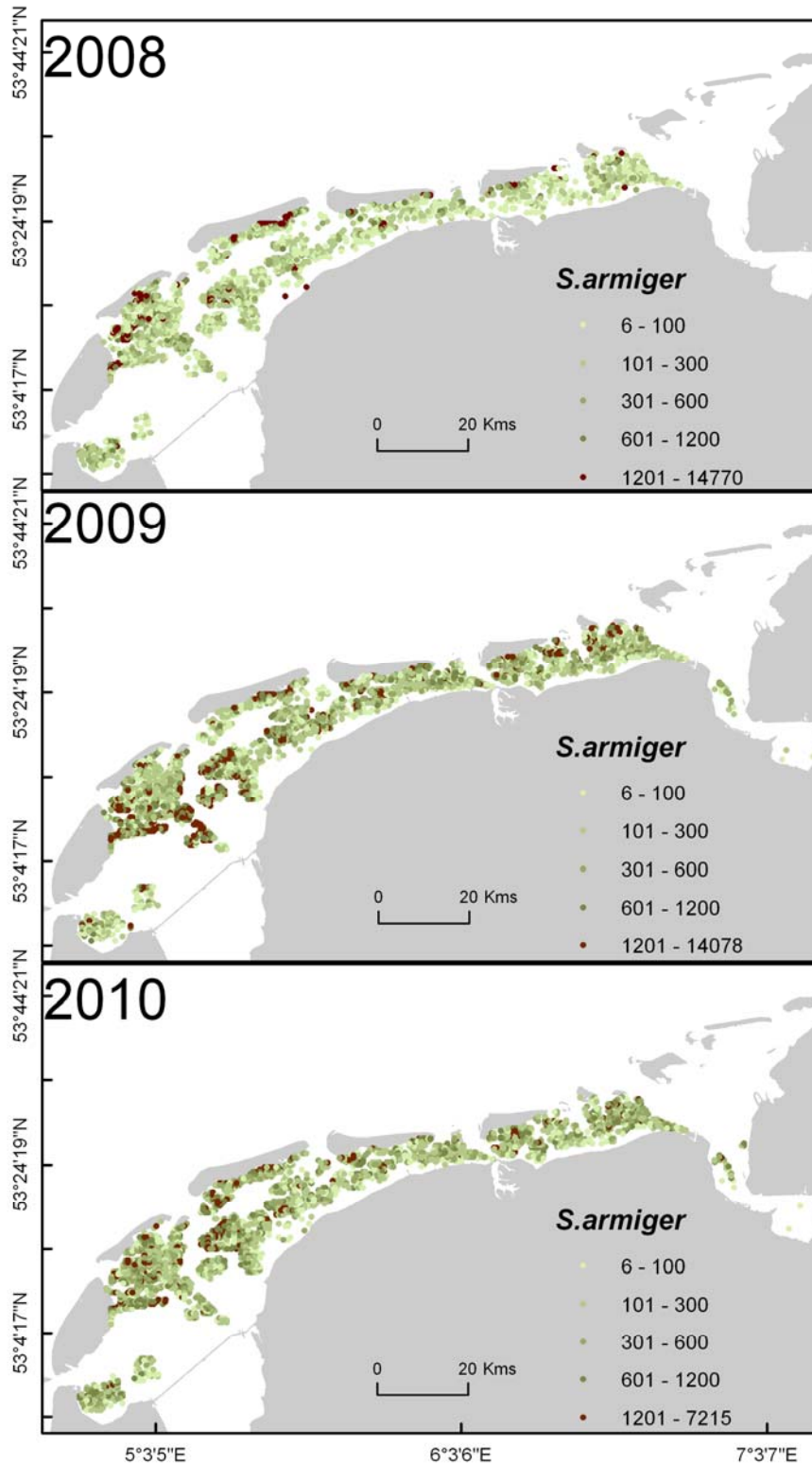
The polychaete bristle worm *Scoloplos cf. armiger* was a species with lower densities in the predicted subsidence regions relative to the remainder of the Wadden Sea (Appendix 1, Figure 13). Note, however, this negative response was not significantly different to other areas in the Wadden Sea (Figure 13, histogram of F-values from GLM simulations showed that this significant F-value was common by comparison with the F-values from the GLM raw data). The distribution of the densities in 2010 showed the mean was higher in the remainder of the Wadden Sea relative to the predicted subsidence regions. However, the range of densities was similar between the predicted subsidence areas and the remainder of the Wadden Sea.

**Figure 13** The histogram (A) provides a comparison between the F-value from the raw data model (line) versus the F-values from the simulated GLMs (bars). For *Scoloplos cf. armiger*, the true F-value (25) occurs frequently in the simulated models, indicating the densities in the predicted subsidence regions ("in") do not differ relative to the remainder of the Wadden Sea ("out"). Boxplots show the data distribution of *Scoloplos cf. armiger* densities (nrs/m<sup>2</sup>, square root transformed) in the predicted areas of subsidence versus the remainder of the Wadden Sea. In the first boxplot (B), the data used in the GLM model is represented: "in" versus "out". In the lower boxplots, densities of *S.armiger* at the three areas of predicted subsidence are compared with the remainder of the Wadden Sea for the years of 2008, 2009 and 2010 (C-E). The location names are abbreviated Oost Ameland (Ame), Moddergat (Mod), Oost Groningen (OG) and the remaining Wadden Sea (Ws). In all boxplots the dot (blue) gives the mean value. Photo by M.Mulder.





**Figure 14** Densities (nrs/m<sup>2</sup>) of the polychaete *Scoloplos cf. armiger* across the Dutch Wadden Sea in the three survey years. Darker colours indicate higher densities. Note that the Ems Dollard was not sampled in 2008.





A comparison of the *S. armiger* densities for all three survey years showed that the range of densities were consistently higher in the remainder of the Wadden Sea relative to the areas of predicted subsidence (Figure 13). Furthermore, *S. armiger* densities were lowest in 2008, especially in the Oost Groningen area.

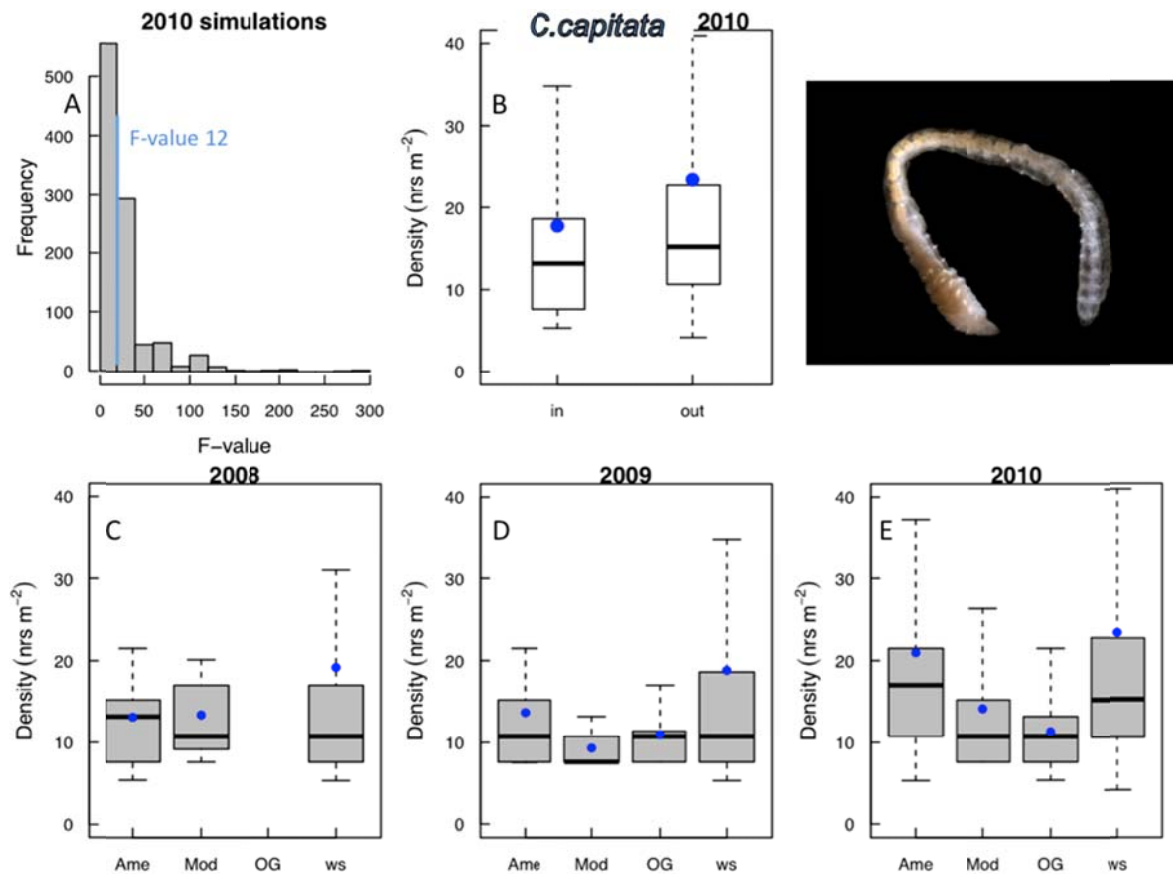
The mapped distribution of *S. armiger* highlights that this species is found widely across the entire Dutch Wadden Sea (Figure 14), mainly where sediments are relatively sandy (Figure 17). Similarly to the boxplots, the mapped distributions highlight that average densities were lowest in 2008 relative to the other two survey years. The mapped distributions tend to suggest that densities were highest in the Vlieland region (2009 and 2010).

The polychaete species *Capitella capitata* also showed a negative density response within the predicted areas of subsidence (Appendix 1, Figure 15). However, this response was not significantly different to other regions in the Wadden Sea (Figure 15, histogram). A comparison of the density distribution of *C. capitata* showed that the range of density values was similar between the "in" and "out" areas. A comparison of the density distributions of *C. capitata* over the three survey years (Figure 15) showed that the mean densities were generally higher in the remainder of the Wadden Sea relative to the areas of predicted subsidence, and that the range in density values was smallest in Moddergat and Oost Groningen in 2009 and 2010.

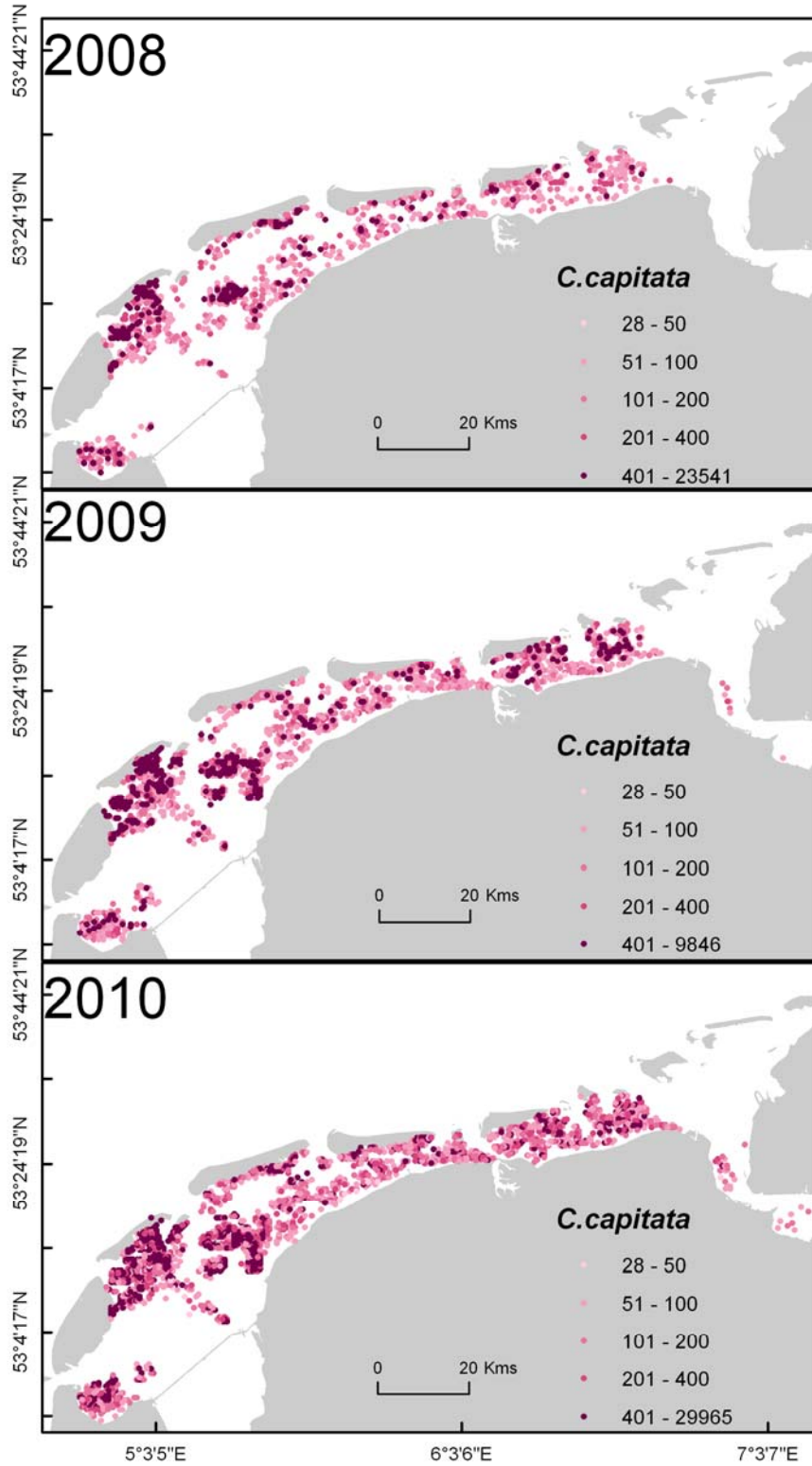
The mapped distributions of *C. capitata* showed that this species was broadly distributed across the entire Dutch Wadden Sea (Figure 16), but does not occur close to the Frisian coastline. This species thus shows an affiliation with sandier sediment types (Figure 17). Highest densities have generally been observed in the Western Wadden Sea by Vlieland, Balgzand and Griend, and also in between Schiermonnikoog and the mainland in 2009 and 2010. Densities were consistently lowest in 2008 by contrast with densities observed in 2009 and 2010 for this species.

The results from the five species shown here indicate that species densities vary both in space and time across the Dutch Wadden Sea, but also show some interesting parallels in their distribution patterns between years. Effects of land subsidence, however, cannot be discerned from the current analyses, as a better understanding of this spatial and temporal variation is needed prior to detecting effects due to other factors.

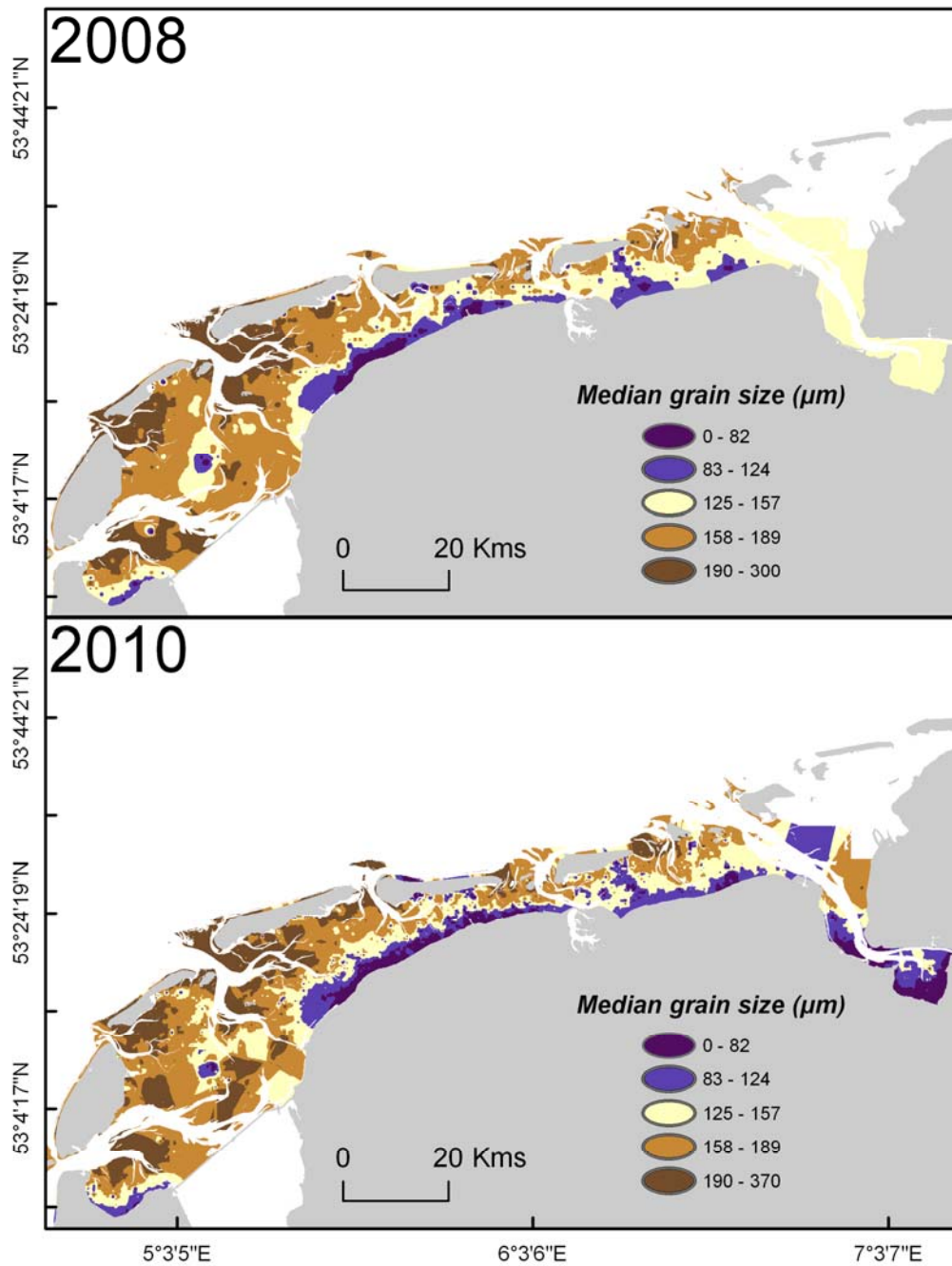
**Figure 15** The histogram (A) provides a comparison between the F-value from the raw data model (line) versus the F-values from the simulated GLMs (bars). For *Capitella capitata*, the true F-value (12) occurs frequently in the simulated models, indicating the densities in the predicted subsidence regions ("in") do not differ relative to the remainder of the Wadden Sea ("out"). Boxplots show the data distribution of *Capitella capitata* densities (nrs/m<sup>2</sup>, square root transformed) in the predicted areas of subsidence versus the remainder of the Wadden Sea. Boxplots show the data distribution of *Capitella capitata* densities (nrs/m<sup>2</sup>, square root transformed) in the predicted areas of subsidence versus the remainder of the Wadden Sea. In the first boxplot (B), the data used in the GLM model is represented: "in" versus "out". In the lower boxplots (C-E), densities of *C. capitata* at the three areas of predicted subsidence are compared with the remainder of the Wadden Sea for the years of 2008, 2009 and 2010. The location names are abbreviated Oost Ameland (Ame), Moddergat (Mod), Oost Groningen (OG) and the remaining Wadden Sea (Ws). In all boxplots the dot (blue) gives the mean value. Photo by H. Hillewaert.



**Figure 16** Densities (nrs/m<sup>2</sup>) of the polychaete *Capitella capitata* across the Dutch Wadden Sea in the three survey years. Darker colours indicate higher densities. Note that the Ems Dollard was not sampled in 2008.



**Figure 17** Sediment grain size composition across the Dutch Wadden Sea in 2008 and 2010 (Median grain size,  $\mu\text{m}$ ). Note that the Ems Dollard was not sampled in 2008. An inverse distance weighting interpolation was used to provide an interpolated surface of grain sizes across the Dutch Wadden Sea (ArcGIS 9.3). Sediments for 2009 are currently being analysed.



## 9. DISCUSSION

Results from the three SIBES surveys (2008, 2009, 2010) currently show that some species had significantly higher densities in the areas of predicted subsidence. However, these species vary over the three years, so to identify whether land subsidence by gas extraction might be a direct cause for these significant differences in species abundance within the predicted subsidence areas, we need a better understanding of other environmental drivers of species abundance.

Three species were identified as having significantly higher densities in the areas predicted to subside for the 2010 survey data, i.e. *Macoma balthica*, *Alitta succinea* and *Ensis directus*. By comparison in 2009, it was observed that *Alitta virens*, *Urothoe poseidonis*, *Magelona johnstoni* and *Heteromastis filiformis* differed significantly in the predicted gas subsidence regions relative to the remainder of the Wadden Sea. Whereas in 2008, *Nephtys cirrosa*, *Pygospia elegans*, *Marenzelleria viridis* and *Spio martinensis* were different in the predicted subsidence regions. An examination of the distribution maps of these three species in 2010 showed that these species had much higher densities in the eastern Wadden Sea relative to the western Wadden Sea. In the case of *A. succinea* highest densities were observed in the Ems Dollard area, whereas highest densities of *M. balthica* were observed along the relatively muddy Frisian coastline. In addition, a comparison of these three species at the predicted subsidence regions through time showed that the annual change in density was greater than the location effect.

The two species identified as having lower densities in the predicted subsidence regions, *S. armiger* and *C. capitata*, did not have a significantly different response to other areas of the Wadden Sea (simulations). Instead, the mapped distributions of these two species showed that they were widespread throughout the Wadden Sea, with the highest densities often in the Vlieland area.

In the current data, species densities and richness were lowest in 2008. The relatively low numbers in 2008 could indicate harsh winter weather in previous years (Honkoop & Beukema 1997, Beukema et al. 1998, Beukema 1991). However, according to the Hellman classification the winters of 2006/7 and 2007/8 were mild (<20 days below freezing in both, <http://www.knmi.nl/klimatologie/lijsten/hellmann.html>). By contrast, the subsequent winters were harsher according to the Hellman classification (55 and 95 days below freezing for 2009 and 2010). Another possibility might be that the low numbers in 2008 are on an increasing trajectory from a severe winter event in previous years. But these possibilities need further investigation. Note that such temporal variability might be predictable given more data is collected over time, as the temporal variability in abundance of the large majority of common taxa is often not random (Hewitt & Thrush 2007).

Another trend that emerges when comparing the community responses between years is that density, biomass and richness of macrofauna were highest along the Frisian coastline, close to Schiermonnikoog, near Griend and also in the

vicinity of Vlieland, but lowest in the Ems Dollard region. Environmental variables explaining these patterns need further investigation, as sediment grain size and inundation time do not visually appear to be the sole variables that can explain these patterns (see Appendix 9). A possible reason for the higher richness, diversity and biomass in the Vlieland region might be tidal current velocities, which could continuously replenish the planktonic food sources in this area. By contrast, the low richness and biomass in the Ems Dollard might be related to the freshwater influence in this region.

In summary, our current analysis highlights that there may be an indication of that species are responding differently in the area of predicted subsidence, but also that the species identified as significant by the models differed between years and were observed to have very different spatial distributions, and thus habitat preferences, across the Wadden Sea. This observation is not new, as previous studies of Wadden Sea macrofauna have shown that macrofaunal species have different sediment grain size and inundation time associations (van der Meer 1991, Compton et al. 2008, Compton et al. 2009, Kraan et al. 2010). But what is new in the SIBES data is that we are examining macrofauna distributions at much larger spatial scales than previously measured across the Wadden Sea. Thus we need to get a better handle on the factors driving the spatial distributions of our species, before we can understand or predict what would happen with increased land subsidence. For example, other variables that we need to acquire include measures of microphytobenthos productivity (van der Wal et al. 2008, van der Wal et al. 2010), tidal current speeds, orbital velocities and salinity. These variables are currently not easily accessible, thus work is in progress to obtain this data for SIBES. In the future, we also need to take into account in our analyses that sampling is conducted over a period of about four months (see Appendix 6).

A previous study exploring possible effects of land subsidence and sea level change predicted that effects of land subsidence should be minimal across the Wadden Sea (Beukema 1998, Beukema 2002). This prediction was based on the association between macrofaunal biomass, richness and density with respect to inundation time and assuming that gas subsidence would be <10 cm over a few decades, with an expected rate of subsidence of <2 mm per year (see references in Beukema 2002). The observation that the macrofaunal densities did not show any striking differences in the predicted subsidence regions in this report might suggest that our results currently support this prediction.

But although the predictions provided by Beukema (2002) are a useful starting point they should be interpreted with considerable caution, as land subsidence may affect other environmental variables that could change the macrofaunal densities or species composition. Although Wang and Eysink (2005) concluded that land subsidence resulting from gas extraction would not result in changes in sediment transport and orbital velocities, longer inundation times could also have effects on other properties of the ecosystem, e.g. microphytobenthos densities. As we currently do not have a description of many other environmental variables that could affect community composition across the Wadden Sea we need to

obtain these variables so that we can describe macrofaunal composition with respect to these variables and then examine if we can identify changes in the areas of predicted subsidence.

Current evidence suggests that we need to get a better handle on the variables that explain the spatial distribution of species in the Wadden Sea. In addition, we need to continue sampling so that we can tease apart variation due to natural circumstances, versus variation due to human factors. It is well known from many other long-term studies of macrofauna that in attempting to detect impacts one needs to first identify the factors driving natural variability among sites (Hewitt et al. 2001). Furthermore, in ecology it is known that generality can be conferred by conducting studies at a number of sites, on a number of occasions, or on a number of different organisms (Hewitt et al. 2001).

## **10. CONCLUSIONS**

In conclusion, there are some indications from the SIBES time series that some species are significantly different in the predicted areas of subsidence. However, responses appear to be variable in space and time. The power of our analysis will increase over time with more years of study, and thus will allow us to disentangle the anthropogenic effects from the natural variation in the future. Thus we strongly suggest that the SIBES sampling continues so that insights into factors driving natural variation can be gained, and consequently the role of anthropogenic factors can be determined.





## **11. ACKNOWLEDGEMENTS**

The work would not have been possible without the dedicated contribution of a large number of volunteers, staff and Phd-, MSc-, and BSc-students volunteers (in random order): Simone Miguel, Rob Dapper, Jutta Leyer, Allert Bijleveld, Babeth van der Weide, Maxine Bogaert, Wout Konradt, Suzanne Kuhn, Lisa Faber, Tom Voorham, Bernard Spaans, Eva Immler, Anastasia Limareva, Janneke Bakker, Christine Koersen, Rebekka Schueller, Marieke Vloemans, Joke Venekamp, Marc van Roomen, Marleen v.d. Werf, Stefan Preeken, Susana Freitas, Silvia Santos, Wouter Ruoff, Maria van Leeuwen, Anneke Rippen, Dennis Waasdorp, Gwenael Quaintenne, Hans Witte, Paul van Oudheusden, Sjoerd Duijns, Bregje Koster, Roos Kentie, John Weel, Joost van Bruggen, Jose Reijnders, Amrit Cado van der Lely, Jan van Gils, Lucie Smaltz, Paul Brotherton, Hedwig Ens, Nur Annis Hidayati, Thomas Leerink, Carsten Wentink, Marieke Feis, Coen Wagner, Ting Zhao, Arno den Toom, Michiel Dammers, Miriam Vorenhout, Koen Derks, Karin van der Reijde, Julia Piechocki, Patrick Leven, Els van der Zee, Tjisse van der Heijde, Tjibbe Stelwagen, Kirsten Grond, Bram Verheijen, Jordi Segers, Udhi Hernawan, Mandy Koper, Annemijn de Groot, Brenda Scheffers, Koen de Nooijer, Sarah Put and the crew of the Navicula; Kees van der Star, Tony van der Vis, Hein de Vries, Wim Jan Boon and Cor van Heerwaarden.





## 12. REFERENCES

- Aarts G, Koolhaas A, Dekinga A, Holthuijsen S, ten Horn J, Smith J, Kraan C, Brugge M, Bijleveld A, Piersma T and v.d. Veer H (2011) Benthic macro fauna in relation to natural gas extraction in the Dutch Wadden Sea. Report for the Nederlands Aardolie Maatschappij. NIOZ report number 2486.2.SIBES.NIOZ
- Aarts G, Dekinga A, Holthuijsen S, ten Horn J, Smith J, Kraan C, Brugge M, Bijleveld A, Piersma T and v.d. Veer H (2010) Benthic macro fauna in relation to natural gas extraction in the Dutch Wadden Sea. Report for the Nederlands Aardolie Maatschappij. NIOZ report number 2486.1.SIBES.NIOZ
- Beukema JJ, Dekker R, and Philippart CJM (2010) Long-term variability in bivalve recruitment, mortality, and growth and their contribution to fluctuations in food stocks of shellfish-eating birds. *Marine Ecology-Progress Series* 414: 117-130
- Beukema JJ (2002) Expected changes in the benthic fauna of Wadden Sea tidal flats as a result of sea-level rise or bottom subsidence. *Journal of Sea Research* 47: 25-39
- Beukema JJ, Flach EC, Dekker R, and Starink M (1999) A long-term study of the recovery of the macrozoobenthos on large defaunated plots on a tidal flat in the Wadden Sea. *Journal of Sea Research* 42: 235-254
- Beukema JJ (1998) 7.2 Effecten op bodemfauna. In *Integrale Bodemdalingstudie Waddenzee*. Nederlandse Aardolie Maatschappij, Assen.
- Beukema JJ, Honkoop PJC, and Dekker R (1998) Recruitment in *Macoma balthica* after mild and cold winters and its possible control by egg production and shrimp predation. *Hydrobiologia* 375/376: 23-34
- Beukema JJ, and Cadée GC (1997) Local differences in macrozoobenthic response to enhanced food supply caused by mild eutrophication in a Wadden Sea area: food is only locally a limiting factor. *Limnology and Oceanography* 42: 1424-143
- Beukema JJ (1991) The abundance of shore crabs *Carcinus maenas* (L.) on a tidal flat in the Wadden Sea after cold and mild winters. *Journal of Experimental Marine Biology and Ecology* 153: 97 - 113
- Beukema JJ (1974) Seasonal changes in the biomass of the macro-benthos of a tidal flat area in the Dutch Wadden Sea. *Netherlands Journal of Sea Research* 8: 94-107
- Beukema JJ (1976) Biomass and species richness of the macro-benthic animals living on the tidal flats of the Dutch Wadden Sea. *Netherlands Journal of Sea Research* 10: 236-261
- Bijleveld AI, van Gils JA, van der Meer J, Dekinga A, Kraan C, van der Veer HW, and Piersma T (In Press) Designing a benthic monitoring programme with multiple conflicting objectives. *Methods in Ecology and Evolution*
- Bos OG, Philippart CJM, and van der Meer J (2007) Effects of temporary food limitation on development and mortality of *Macoma balthica* larvae. *Marine Ecology-Progress Series* 330: 155-162
- Bos OG, Hendriks IE, Strasser M, Dolmer P, and Kamermans P (2006) Estimation of food limitation of bivalve larvae in coastal waters of north-western Europe. *Journal of Sea Research* 55: 191-206
- Compton TJ, Troost TA, Drent J, Kraan C, Bocher P, Leyrer J, Dekinga A, and Piersma T (2009) Repeatable sediment associations of burrowing bivalves across six European tidal flat systems. *Marine Ecology-Progress Series* 382: 87-98
- Compton TJ, Troost TA, van der Meer J, Kraan C, Honkoop PJC, Rogers DI, Pearson GB, de Goeij P, Bocher P, Lavaleye MSS, Leyrer J, Yates MG, Dekinga A, and Piersma T (2008) Distributional overlap rather than habitat differentiation characterizes co-occurrence of bivalves in intertidal soft sediment systems worldwide. *Marine Ecology-Progress Series* 373: 25 - 3
- Dame R, Dankers N, Prins T, Jongsma H, and Smaal A (1991) The influence of mussel beds on nutrients in the western Wadden Sea and eastern Scheldt estuaries. *Estuaries and Coasts* 14: 130-138

- Ellis JI, Norkko A, and Thrush SF (2000) Broad-scale disturbance of intertidal and shallow sublittoral soft-sediment habitats; effects on the benthic macrofauna. *Journal of Aquatic Ecosystem Stress and Recovery* 7: 57-74
- Gray JS & Elliott M. (2009) Ecology of Marine Sediment: From Science to Management. Oxford University Press.
- Hayward PJ & Ryland JS. (1995) Handbook of the marine fauna of North-West Europe. Oxford University Press
- Hartmann-Schröder G. 1996. Annelida, Borstenwürmer, Polychaeta. Die Tierwelt Deutschlands, 58. Teil. Gustav Fischer Verlag, Jena..Hewitt JE, and Thrush SF (2008) Reconciling the influence of global climate phenomena on macrofaunal temporal dynamics at a variety of spatial scales. *Global Change Biology* 15: 1911-1929
- Hewitt JE, and Thrush SF (2007) Effective long-term ecological monitoring using spatially and temporally nested sampling. *Environmental Monitoring Assessment* 133: 295-307
- Hewitt JE, Thrush SE, and Cummings VJ (2001) Assessing environmental impacts: effects of spatial and temporal variability at likely impact scales. *Ecological Applications* 11: 1502-1516
- Honkoop PJC, and Beukema JJ (1997) Loss of body mass in winter in three intertidal bivalve species: an experimental and observational study of the interacting effects between water temperature, feeding time and feeding behaviour. *Journal of Experimental Marine Biology and Ecology* 212: 277-297
- Kam J, Goeij P & Moore SJ. (2004) Shorebirds: an illustrated behavioural ecology. KNNV.
- Kraan C, Aarts G, van der Meer J, and Piersma T (2010) The role of environmental variables in structuring landscape-scale species distributions in seafloor habitats. *Ecology* 91: 1583-1590
- Kraan C, Dekinga A, and Piersma T (2011) Now an empty mudflat: past and present benthic abundances in the western Dutch Wadden Sea. *Helgoland Marine Research* 65: 51-58
- Levin LA, Boesch DF, Covich A, Dahm C, Erseus C, Ewel KC, Kneib RT, Moldenke A, Palmer MA, Snelgrove P, Strayer D, and Weslawski JM (2001) The function of marine critical transition zones and the importance of sediment biodiversity. *Ecosystems* 4: 430-451
- Luttikhuisen PC, Bol A, Cardoso JFMF, and Dekker R (2011) Overlapping distributions of cryptic *Scoloplos cf. armiger* species in the western Wadden Sea. *Journal of Sea Research* 66: 231-237
- Perluka R, Wiegmann EB, Jordans RWL, and Swart LMTh (2006) Opnametechnieken Waddenzee, Rijkswaterstaat, Rapport number Z3995
- Underwood AJ. (1997) Experiments in ecology: their logical design and interpretation using analysis of variance. Cambridge University Press.
- van Der Meer J, Beukema JJ, and Dekker R (2001) Long-term variability in secondary production of an intertidal bivalve population is primarily a matter of recruitment variability. *Journal of Animal Ecology* 70: 159-169
- van der Meer J, Beukema J, and Dekker R (2000) Population dynamics of two marine polychaetes: the relative role of density dependence, predation, and winter conditions. *ICES Journal of Marine Science* 57: 1488-1494
- van der Meer J(1997) Sampling design of monitoring programmes for marine benthos: a comparison between the use of fixed versus randomly selected stations. *Journal of Sea Research* 37: 167-179
- van der Meer J(1991) Exploring macrobenthos environment relationship by canonical correlation analysis. *Journal of Experimental Marine Biology and Ecology* 148: 105-120
- van der Wal D, Herman PMJ, Forster RM, Ysebaert TJ, Rossi F, Knaeps E, Plancke Y, and Ides S (2008) Distribution and dynamics of intertidal macrobenthos predicted from remote sensing: response to microphytobenthos and environment. *Marine Ecology-Progress Series* 367: 57-72

- van der Wal D, Wielemaker-van den Dool A, and Herman PMJ (2010) Spatial synchrony in intertidal benthic algal biomass in temperate coastal and estuarine ecosystems. *Ecosystems* 13: 338-351
- Wang ZB and Eysink WD (2005) Abiotische effecten van bodemdaling in de Waddenzee door gaswinning, WL/Delft hydraulics
- Warwick RM, Clarke KR, and Somerfield PJ (2010) Exploring the marine biotic index (AMBI): variations on a theme by Angel Borja. *Marine Pollution Bulletin* 60: 554-559
- Wolff WJ (2000) Causes of extirpations in the Wadden Sea, an estuarine area in the Netherlands. *Conservation Biology* 14: 876-885
- Wolff WJ (2005) The exploitation of living resources in the Dutch Wadden Sea: a historical overview. *Helgoland Marine Research* 59: 31-38
- Wolff WJ. (1983) Ecology of the Wadden Sea. A.A. Balkema Press, Rotterdam.
- Zwarts L. (1996) Waders and their food supplies. PhD Thesis. University of Groningen.

**Appendix 1. Results from the generalized linear model (GLM, quasi poisson distributed errors) to examine whether there are significant differences between the densities of individual OTUs across the different regions in 2010. Models were only run when there were eight individuals both inside and outside the regions of interest. The results are presented for all regions, Oost Ameland, East Groningen and Moddergat. The estimates (est) and their standard errors, the t-values and the F-values and the associated significance values (p-ttest and p-Ftest) for each GLM model are given below. Significant results are given in bold and positive estimate values indicate a positive significant difference, i.e. that the densities are highest “in” the subsidence region, whereas negative values indicate that densities were lower “in” the subsidence regions. The densities inside and outside the region are given (ab.in and ab.out), as well as the occurrences (presences, pr.in and pr.out).**

| spec                           | est     | se     | tvalue  | p_ttest | Fvalue   | p_Ftest | ab.in  | ab.out  | pr.in | pr.out |
|--------------------------------|---------|--------|---------|---------|----------|---------|--------|---------|-------|--------|
| <b>2010 All regions</b>        |         |        |         |         |          |         |        |         |       |        |
| <i>Scoloplos armiger</i>       | -0.5687 | 0.1244 | -4.5704 | 0.0000  | 24.9329  | 0.0000  | 55205  | 1167389 | 137   | 2455   |
| <i>Ensis directus</i>          | 1.2509  | 0.2204 | 5.6745  | 0.0000  | 25.1238  | 0.0000  | 10053  | 34457   | 42    | 320    |
| <i>Macoma balthica</i>         | 1.1290  | 0.1550 | 7.2841  | 0.0000  | 41.9530  | 0.0000  | 101454 | 392827  | 171   | 1557   |
| <i>Alitta succinea</i>         | 1.8437  | 0.1378 | 13.3829 | 0.0000  | 136.6908 | 0.0000  | 28150  | 53337   | 72    | 322    |
| <i>Capitella capitata</i>      | -0.8442 | 0.2744 | -3.0764 | 0.0021  | 12.4456  | 0.0004  | 38079  | 1060614 | 121   | 1927   |
| <i>Pygospio elegans</i>        | -1.2704 | 0.6341 | -2.0035 | 0.0452  | 6.2080   | 0.0128  | 72139  | 3076975 | 163   | 2607   |
| <i>Heteromastus filiformis</i> | 0.5124  | 0.2055 | 2.4935  | 0.0127  | 5.4659   | 0.0194  | 11519  | 82623   | 93    | 723    |
| <i>Oligochaeta</i> sp          | -0.5534 | 0.2774 | -1.9949 | 0.0461  | 4.7258   | 0.0298  | 73425  | 1529059 | 92    | 1343   |
| <i>Scrobicularia plana</i>     | 0.5928  | 0.2996 | 1.9788  | 0.0479  | 3.3837   | 0.0659  | 1187   | 7854    | 19    | 112    |
| <i>Corophium</i> sp            | -0.4769 | 0.2813 | -1.6957 | 0.0900  | 3.3284   | 0.0682  | 96610  | 1863767 | 93    | 945    |
| <i>Aphelochaeta</i>            | 0.2393  | 0.1363 | 1.7557  | 0.0792  | 2.8910   | 0.0891  | 182138 | 1716861 | 173   | 1962   |

*marioni*

|                              |         |        |         |        |        |        |        |         |     |      |
|------------------------------|---------|--------|---------|--------|--------|--------|--------|---------|-----|------|
| <i>Eteone longa</i>          | 0.2242  | 0.1297 | 1.7288  | 0.0839 | 2.8133 | 0.0936 | 31442  | 300878  | 138 | 1715 |
| <i>Eumida sanguinea</i>      | 0.9366  | 0.5351 | 1.7504  | 0.0801 | 2.4877 | 0.1148 | 2541   | 11924   | 12  | 57   |
| <i>Lanice conchilega</i>     | 0.3781  | 0.2348 | 1.6103  | 0.1074 | 2.3501 | 0.1253 | 40809  | 334797  | 87  | 1004 |
| <i>Mya arenaria</i>          | -0.3856 | 0.2707 | -1.4246 | 0.1544 | 2.2803 | 0.1311 | 1642   | 28915   | 27  | 354  |
| <i>Streblospio</i>           |         |        |         |        |        |        |        |         |     |      |
| <i>shrubsolii</i>            | 0.4587  | 0.3198 | 1.4344  | 0.1515 | 1.8300 | 0.1762 | 1328   | 10052   | 12  | 118  |
| <i>Urothoe poseidonis</i>    | -0.2910 | 0.3049 | -0.9545 | 0.3399 | 0.9934 | 0.3190 | 39647  | 635078  | 50  | 1048 |
| <i>Carcinus maenas</i>       | 0.4666  | 0.4435 | 1.0520  | 0.2929 | 0.9829 | 0.3215 | 3753   | 28185   | 36  | 295  |
| <i>Nephtys hombergii</i>     | -0.6226 | 0.7744 | -0.8040 | 0.4214 | 0.7860 | 0.3754 | 912    | 20360   | 17  | 288  |
| <i>Crangon crangon</i>       | -0.2458 | 0.3192 | -0.7701 | 0.4413 | 0.6377 | 0.4246 | 1288   | 19724   | 19  | 232  |
| <i>Polydora cornuta</i>      | 0.2258  | 0.2917 | 0.7741  | 0.4389 | 0.5639 | 0.4527 | 13772  | 131578  | 66  | 456  |
| <i>Marenzelleria viridis</i> | -0.1114 | 0.1612 | -0.6912 | 0.4895 | 0.4933 | 0.4825 | 288305 | 3859158 | 121 | 2158 |
| <i>Magelona mirabilis</i>    | 0.2599  | 0.4138 | 0.6282  | 0.5299 | 0.3681 | 0.5440 | 693    | 6398    | 9   | 85   |
| <i>Nereide</i> sp            | -0.2760 | 0.5130 | -0.5381 | 0.5906 | 0.3142 | 0.5751 | 930    | 14670   | 12  | 119  |
| <i>Hydrobia ulvae</i>        | -0.2574 | 0.5620 | -0.4580 | 0.6470 | 0.2264 | 0.6342 | 417983 | 6474427 | 78  | 634  |
| <i>Spio martinensis</i>      | -1.0851 | 3.0095 | -0.3606 | 0.7185 | 0.1870 | 0.6654 | 1155   | 40927   | 12  | 176  |
| <i>Bylgides sarsi</i>        | 0.1534  | 0.4142 | 0.3704  | 0.7111 | 0.1316 | 0.7168 | 3261   | 33497   | 30  | 396  |
| <i>Phyllodoce mucosa</i>     | 0.1590  | 0.4945 | 0.3216  | 0.7478 | 0.0990 | 0.7530 | 9037   | 92301   | 21  | 399  |
| <i>Hediste diversicolor</i>  | 0.0441  | 0.1782 | 0.2474  | 0.8046 | 0.0604 | 0.8058 | 27803  | 318563  | 98  | 1337 |
| <i>Bathyporeia sarsi</i>     | -0.0850 | 0.6022 | -0.1411 | 0.8878 | 0.0204 | 0.8864 | 3129   | 40785   | 12  | 121  |
| <i>Cerastoderma edule</i>    | 0.0571  | 0.5567 | 0.1025  | 0.9183 | 0.0103 | 0.9190 | 15311  | 173167  | 83  | 725  |
| <i>Nephtys caeca</i>         | -0.0444 | 0.4699 | -0.0944 | 0.9248 | 0.0090 | 0.9243 | 635    | 7950    | 10  | 105  |

**2010 Oost****Ameland**

|                              |         |        |         |        |         |        |        |         |    |      |
|------------------------------|---------|--------|---------|--------|---------|--------|--------|---------|----|------|
| <i>Ensis directus</i>        | 2.1052  | 0.2217 | 9.4951  | 0.0000 | 58.7002 | 0.0000 | 9476   | 34457   | 34 | 320  |
| <i>Eteone longa</i>          | 0.8802  | 0.1462 | 6.0191  | 0.0000 | 28.4756 | 0.0000 | 24305  | 300878  | 73 | 1715 |
| <i>Lanice conchilega</i>     | 1.1822  | 0.2473 | 4.7801  | 0.0000 | 16.8286 | 0.0000 | 36583  | 334797  | 59 | 1004 |
| <i>Macoma balthica</i>       | 1.3142  | 0.1826 | 7.1961  | 0.0000 | 37.1971 | 0.0000 | 48977  | 392827  | 79 | 1557 |
| <i>Marenzelleria viridis</i> | 0.7475  | 0.1633 | 4.5766  | 0.0000 | 16.9920 | 0.0000 | 273003 | 3859158 | 76 | 2158 |
| <i>Corophium</i> sp          | -2.3406 | 1.1172 | -2.0950 | 0.0362 | 11.1045 | 0.0009 | 6011   | 1863767 | 21 | 945  |

Report 2012.1.SIBES.NIOZ

|                                |         |        |         |        |          |        |        |         |    |      |
|--------------------------------|---------|--------|---------|--------|----------|--------|--------|---------|----|------|
| <i>Eumida sanguinea</i>        | 1.8500  | 0.5396 | 3.4287  | 0.0006 | 7.8164   | 0.0052 | 2541   | 11924   | 12 | 57   |
| <i>Carcinus maenas</i>         | 1.1056  | 0.5100 | 2.1677  | 0.0302 | 3.5150   | 0.0609 | 2852   | 28185   | 24 | 295  |
| <i>Pygospio elegans</i>        | -1.6560 | 1.2305 | -1.3457 | 0.1785 | 3.3579   | 0.0670 | 19679  | 3076975 | 54 | 2607 |
| <i>Phyllodoce mucosa</i>       | 1.0064  | 0.5058 | 1.9896  | 0.0467 | 3.0242   | 0.0821 | 8459   | 92301   | 12 | 399  |
| <i>Urothoe poseidonis</i>      | -0.6384 | 0.5457 | -1.1699 | 0.2421 | 1.6963   | 0.1928 | 11237  | 635078  | 33 | 1048 |
| <i>Scrobicularia plana</i>     | 0.5752  | 0.4577 | 1.2568  | 0.2089 | 1.3387   | 0.2473 | 468    | 7854    | 9  | 112  |
| <i>Scoloplos armiger</i>       | -0.1771 | 0.1597 | -1.1093 | 0.2674 | 1.3020   | 0.2539 | 32760  | 1167389 | 77 | 2455 |
| <i>Crangon crangon</i>         | 0.4139  | 0.3631 | 1.1399  | 0.2544 | 1.1502   | 0.2836 | 1000   | 19724   | 13 | 232  |
| <i>Heteromastus filiformis</i> | -0.3441 | 0.4769 | -0.7215 | 0.4707 | 0.5821   | 0.4455 | 1962   | 82623   | 21 | 723  |
| <i>Capitella capitata</i>      | -0.2037 | 0.3189 | -0.6387 | 0.5231 | 0.4354   | 0.5094 | 28984  | 1060614 | 66 | 1927 |
| <i>Hydrobia ulvae</i>          | -0.5666 | 1.0351 | -0.5474 | 0.5841 | 0.3620   | 0.5474 | 123074 | 6474427 | 15 | 634  |
| <i>Hediste diversicolor</i>    | -0.1499 | 0.3021 | -0.4963 | 0.6197 | 0.2583   | 0.6113 | 9186   | 318563  | 32 | 1337 |
| <i>Cerastoderma edule</i>      | 0.2396  | 0.8027 | 0.2984  | 0.7654 | 0.0829   | 0.7735 | 7372   | 173167  | 40 | 725  |
| Oligochaeta sp                 | 0.0543  | 0.3204 | 0.1694  | 0.8655 | 0.0282   | 0.8667 | 54081  | 1529059 | 38 | 1343 |
| <i>Polydora cornuta</i>        | -0.0867 | 0.5261 | -0.1647 | 0.8692 | 0.0279   | 0.8674 | 4042   | 131578  | 24 | 456  |
| <i>Nephtys hombergii</i>       | -0.1274 | 0.9677 | -0.1316 | 0.8953 | 0.0180   | 0.8932 | 601    | 20360   | 10 | 288  |
| <i>Aphelochaeta marioni</i>    | 0.0309  | 0.2315 | 0.1333  | 0.8940 | 0.0176   | 0.8945 | 59318  | 1716861 | 70 | 1962 |
| <i>Bylgides sarsi</i>          | 0.0023  | 0.6871 | 0.0034  | 0.9973 | 0.0000   | 0.9973 | 1125   | 33497   | 18 | 396  |
| <b>2010 Oost Groningen</b>     |         |        |         |        |          |        |        |         |    |      |
| <i>Alitta succinea</i>         | 2.6765  | 0.1407 | 19.0210 | 0.0000 | 232.8366 | 0.0000 | 24858  | 53337   | 54 | 322  |
| <i>Marenzelleria viridis</i>   | -3.3236 | 1.2102 | -2.7464 | 0.0061 | 31.4609  | 0.0000 | 4458   | 3859158 | 20 | 2158 |
| <i>Scoloplos armiger</i>       | -1.0520 | 0.2530 | -4.1584 | 0.0000 | 25.0399  | 0.0000 | 13073  | 1167389 | 34 | 2455 |
| <i>Capitella capitata</i>      | -2.3266 | 0.9284 | -2.5061 | 0.0122 | 15.7951  | 0.0001 | 3320   | 1060614 | 26 | 1927 |
| <i>Heteromastus filiformis</i> | 1.0976  | 0.2461 | 4.4593  | 0.0000 | 14.8726  | 0.0001 | 7940   | 82623   | 57 | 723  |
| <i>Hediste diversicolor</i>    | -1.8014 | 0.6902 | -2.6101 | 0.0091 | 13.4676  | 0.0002 | 1686   | 318563  | 19 | 1337 |
| <i>Eteone longa</i>            | -1.1039 | 0.3859 | -2.8608 | 0.0042 | 12.0894  | 0.0005 | 3199   | 300878  | 34 | 1715 |
| <i>Macoma balthica</i>         | 0.9858  | 0.2532 | 3.8938  | 0.0001 | 11.6177  | 0.0007 | 33757  | 392827  | 39 | 1557 |
| Oligochaeta sp                 | -2.0620 | 0.9053 | -2.2778 | 0.0228 | 11.5310  | 0.0007 | 6236   | 1529059 | 25 | 1343 |

|                                |         |        |         |        |         |        |        |         |    |      |
|--------------------------------|---------|--------|---------|--------|---------|--------|--------|---------|----|------|
| <i>Aphelochaeta marioni</i>    | -1.0311 | 0.3958 | -2.6048 | 0.0092 | 9.7454  | 0.0018 | 19633  | 1716861 | 51 | 1962 |
| <i>Polydora cornuta</i>        | -1.1133 | 0.8887 | -1.2528 | 0.2104 | 2.3279  | 0.1271 | 1386   | 131578  | 13 | 456  |
| <i>Pygospio elegans</i>        | -1.0275 | 0.9225 | -1.1139 | 0.2654 | 1.7797  | 0.1823 | 35310  | 3076975 | 58 | 2607 |
| <i>Corophium</i> sp            | 0.3324  | 0.3067 | 1.0837  | 0.2786 | 1.0632  | 0.3026 | 83324  | 1863767 | 62 | 945  |
| <i>Cerastoderma edule</i>      | -1.3471 | 1.7845 | -0.7549 | 0.4503 | 0.9286  | 0.3353 | 1444   | 173167  | 10 | 725  |
| <i>Mya arenaria</i>            | -0.1020 | 0.3787 | -0.2693 | 0.7877 | 0.0749  | 0.7843 | 837    | 28915   | 13 | 354  |
| <i>Hydrobia ulvae</i>          | 0.1986  | 0.7288 | 0.2725  | 0.7853 | 0.0699  | 0.7915 | 253204 | 6474427 | 50 | 634  |
| <b>2010 Moddergat</b>          |         |        |         |        |         |        |        |         |    |      |
| <i>Aphelochaeta marioni</i>    | 1.2086  | 0.1785 | 6.7693  | 0.0000 | 32.7824 | 0.0000 | 103187 | 1716861 | 52 | 1962 |
| <i>Hediste diversicolor</i>    | 1.0856  | 0.2256 | 4.8123  | 0.0000 | 17.0515 | 0.0000 | 16930  | 318563  | 47 | 1337 |
| <i>Scrobicularia plana</i>     | 1.6293  | 0.3771 | 4.3209  | 0.0000 | 12.2367 | 0.0005 | 719    | 7854    | 10 | 112  |
| <i>Marenzelleria viridis</i>   | -1.8542 | 0.7823 | -2.3702 | 0.0178 | 11.4448 | 0.0007 | 10844  | 3859158 | 25 | 2158 |
| <i>Scoloplos armiger</i>       | -0.8045 | 0.2956 | -2.7212 | 0.0065 | 9.8028  | 0.0018 | 9372   | 1167389 | 26 | 2455 |
| <i>Macoma balthica</i>         | 0.9766  | 0.2795 | 3.4935  | 0.0005 | 9.2283  | 0.0024 | 18720  | 392827  | 53 | 1557 |
| <i>Polydora cornuta</i>        | 1.2623  | 0.3749 | 3.3667  | 0.0008 | 8.0114  | 0.0047 | 8344   | 131578  | 29 | 456  |
| <i>Urothoe poseidonis</i>      | 0.8654  | 0.3631 | 2.3833  | 0.0172 | 4.4143  | 0.0357 | 27082  | 635078  | 15 | 1048 |
| <i>Capitella capitata</i>      | -1.1928 | 0.7096 | -1.6809 | 0.0928 | 4.3504  | 0.0371 | 5774   | 1060614 | 29 | 1927 |
| <i>Corophium</i> sp            | -1.5255 | 1.0242 | -1.4895 | 0.1364 | 3.9179  | 0.0478 | 7276   | 1863767 | 10 | 945  |
| <i>Oligochaeta</i> sp          | -0.7389 | 0.6299 | -1.1730 | 0.2409 | 1.7775  | 0.1825 | 13108  | 1529059 | 29 | 1343 |
| <i>Alitta succinea</i>         | 0.6097  | 0.4409 | 1.3827  | 0.1668 | 1.5924  | 0.2071 | 1761   | 53337   | 11 | 322  |
| <i>Pygospio elegans</i>        | -1.1694 | 1.3274 | -0.8809 | 0.3784 | 1.1837  | 0.2767 | 17150  | 3076975 | 51 | 2607 |
| <i>Eteone longa</i>            | -0.3157 | 0.3506 | -0.9003 | 0.3680 | 0.9002  | 0.3428 | 3938   | 300878  | 31 | 1715 |
| <i>Cerastoderma edule</i>      | 0.7373  | 0.8590 | 0.8583  | 0.3908 | 0.5926  | 0.4415 | 6496   | 173167  | 33 | 725  |
| <i>Hydrobia ulvae</i>          | -1.0247 | 1.7776 | -0.5764 | 0.5644 | 0.4786  | 0.4891 | 41705  | 6474427 | 13 | 634  |
| <i>Carcinus maenas</i>         | 0.5770  | 0.8809 | 0.6550  | 0.5125 | 0.3606  | 0.5482 | 901    | 28185   | 12 | 295  |
| <i>Lanice conchilega</i>       | -0.3683 | 0.6962 | -0.5290 | 0.5968 | 0.3165  | 0.5738 | 4158   | 334797  | 26 | 1004 |
| <i>Heteromastus filiformis</i> | 0.0865  | 0.5281 | 0.1638  | 0.8699 | 0.0261  | 0.8717 | 1617   | 82623   | 15 | 723  |



**Appendix 2. Summed total biomass of OTUs in the Dutch Wadden Sea from 2008 to 2010. The total ash free dry mass of an OTU as sampled across the entire Dutch Wadden Sea in a single year is provided (sumAFDM), the mean ash free dry mass for an individual is given (meanAFDM), the number of individuals weighed (n wt) and their taxonomic affiliation are shown. Only the first 17 species with the highest biomass are shown for each year of sampling.**

| sp                           | sumAFDM  | MeanAFDM | sdAFDM | n wt | phylum     | class        | genus         |
|------------------------------|----------|----------|--------|------|------------|--------------|---------------|
| <b>2008</b>                  |          |          |        |      |            |              |               |
| <i>Cerastoderma edule</i>    | 452.0772 | 0.5567   | 0.7473 | 809  | Mollusca   | Bivalvia     | Cerastoderma  |
| <i>Lanice conchilega</i>     | 193.4112 | 0.1928   | 0.4677 | 999  | Annelida   | Polychaeta   | Lanice        |
| <i>Mya arenaria</i>          | 174.5490 | 0.4680   | 1.0435 | 371  | Mollusca   | Bivalvia     | Mya           |
| <i>Ensis directus</i>        | 110.7823 | 0.5153   | 1.1649 | 215  | Mollusca   | Bivalvia     | Ensis         |
| <i>Mytilus edulis</i>        | 69.7502  | 1.0898   | 2.3970 | 64   | Mollusca   | Bivalvia     | Mytilus       |
| <i>Crassostrea gigas</i>     | 69.1198  | 6.2836   | 6.6673 | 11   | Mollusca   | Bivalvia     | Crassostrea   |
| <i>Hediste diversicolor</i>  | 68.2106  | 0.0638   | 0.0877 | 1064 | Annelida   | Polychaeta   | Hediste       |
| <i>Macoma balthica</i>       | 43.9068  | 0.0421   | 0.0541 | 1039 | Mollusca   | Bivalvia     | Macoma        |
| <i>Carcinus maenas</i>       | 37.3582  | 0.1448   | 0.7975 | 256  | Arthropoda | Malacostraca | Cancer        |
| <i>Scoloplos armiger</i>     | 23.9026  | 0.0129   | 0.0182 | 1837 | Annelida   | Polychaeta   | Scoloplos     |
| <i>Alitta virens</i>         | 19.5076  | 0.1355   | 0.2137 | 143  | Annelida   | Polychaeta   | Alitta        |
| <i>Scrobicularia plana</i>   | 18.2296  | 0.1098   | 0.0913 | 165  | Mollusca   | Bivalvia     | Scrobicularia |
| <i>Nephtys hombergii</i>     | 17.7508  | 0.0230   | 0.0254 | 769  | Annelida   | Polychaeta   | Nephtys       |
| <i>Marenzelleria viridis</i> | 13.6744  | 0.0185   | 0.0525 | 735  | Annelida   | Polychaeta   | Marenzelleria |
| <i>Hydrobia ulvae</i>        | 10.4897  | 0.0379   | 0.0624 | 270  | Mollusca   | Gastropoda   | Hydrobia      |
| <i>Alitta succinea</i>       | 8.9766   | 0.0470   | 0.0697 | 191  | Annelida   | Polychaeta   | Alitta        |
| <i>Eunereis longissima</i>   | 4.9504   | 0.0250   | 0.0451 | 193  | Annelida   | Polychaeta   | Eunereis      |
| <b>2009</b>                  |          |          |        |      |            |              |               |
| <i>Cerastoderma edule</i>    | 578.1390 | 0.5793   | 0.8842 | 996  | Mollusca   | Bivalvia     | Cerastoderma  |
| <i>Mya arenaria</i>          | 241.3391 | 0.4623   | 1.0898 | 520  | Mollusca   | Bivalvia     | Mya           |
| <i>Ensis directus</i>        | 215.3145 | 0.2811   | 0.7370 | 765  | Mollusca   | Bivalvia     | Ensis         |
| <i>Mytilus edulis</i>        | 133.8151 | 0.6827   | 4.0481 | 194  | Mollusca   | Bivalvia     | Mytilus       |
| <i>Lanice conchilega</i>     | 109.6402 | 0.1170   | 0.2491 | 932  | Annelida   | Polychaeta   | Lanice        |

Report 2012.1.SIBES.NIOZ

|                              |          |        |        |      |            |              |               |
|------------------------------|----------|--------|--------|------|------------|--------------|---------------|
| <i>Macoma balthica</i>       | 81.3870  | 0.0603 | 0.7039 | 1335 | Mollusca   | Bivalvia     | Macoma        |
| <i>Hediste diversicolor</i>  | 69.4085  | 0.0539 | 0.0794 | 1282 | Annelida   | Polychaeta   | Hediste       |
| <i>Crassostrea gigas</i>     | 64.4491  | 2.8021 | 4.7088 | 23   | Mollusca   | Bivalvia     | Crassostrea   |
| <i>Scoloplos armiger</i>     | 42.1299  | 0.0161 | 0.0955 | 2592 | Annelida   | Polychaeta   | Scoloplos     |
| <i>Carcinus maenas</i>       | 29.6997  | 0.0801 | 0.6577 | 366  | Arthropoda | Malacostraca | Cancer        |
| <i>Scrobicularia plana</i>   | 21.4208  | 0.0927 | 0.0994 | 231  | Mollusca   | Bivalvia     | Scrobicularia |
| <i>Marenzelleria viridis</i> | 16.6707  | 0.0160 | 0.0422 | 1031 | Annelida   | Polychaeta   | Marenzelleria |
| <i>Nephtys hombergii</i>     | 14.4969  | 0.0231 | 0.0217 | 627  | Annelida   | Polychaeta   | Nephtys       |
| <i>Alitta virens</i>         | 12.6385  | 0.1389 | 0.2767 | 91   | Annelida   | Polychaeta   | Alitta        |
| <i>Alitta succinea</i>       | 12.1631  | 0.0238 | 0.0309 | 508  | Annelida   | Polychaeta   | Alitta        |
| <i>Hydrobia ulvae</i>        | 12.0396  | 0.0225 | 0.0395 | 532  | Mollusca   | Gastropoda   | Hydrobia      |
| Corophium sp.                | 10.5006  | 0.0119 | 0.0207 | 860  | Arthropoda | Malacostraca | Corophium     |
| <b>2010</b>                  |          |        |        |      |            |              |               |
| <i>Cerastoderma edule</i>    | 380.6100 | 0.4746 | 0.7391 | 788  | Mollusca   | Bivalvia     | Cerastoderma  |
| <i>Mya arenaria</i>          | 264.8625 | 0.6589 | 1.2308 | 397  | Mollusca   | Bivalvia     | Mya           |
| <i>Macoma balthica</i>       | 185.3322 | 0.1096 | 2.2186 | 1665 | Mollusca   | Bivalvia     | Macoma        |
| <i>Ensis directus</i>        | 112.6106 | 0.2940 | 0.7529 | 380  | Mollusca   | Bivalvia     | Ensis         |
| <i>Mytilus edulis</i>        | 96.3238  | 0.9174 | 1.5492 | 103  | Mollusca   | Bivalvia     | Mytilus       |
| <i>Hediste diversicolor</i>  | 66.9758  | 0.0489 | 0.0775 | 1359 | Annelida   | Polychaeta   | Hediste       |
| <i>Scoloplos armiger</i>     | 65.9947  | 0.0266 | 0.0300 | 2465 | Annelida   | Polychaeta   | Scoloplos     |
| <i>Crassostrea gigas</i>     | 65.2539  | 2.9661 | 4.2870 | 22   | Mollusca   | Bivalvia     | Crassostrea   |
| <i>Scrobicularia plana</i>   | 38.1324  | 0.2685 | 0.2786 | 140  | Mollusca   | Bivalvia     | Scrobicularia |
| <i>Lanice conchilega</i>     | 36.7015  | 0.0351 | 0.0685 | 1039 | Annelida   | Polychaeta   | Lanice        |
| <i>Marenzelleria viridis</i> | 31.7816  | 0.0147 | 0.0340 | 2130 | Annelida   | Polychaeta   | Marenzelleria |
| <i>Littorina littorea</i>    | 24.6275  | 1.0708 | 3.2405 | 23   | Mollusca   | Gastropoda   | Littori       |
| <i>Alitta virens</i>         | 22.6824  | 0.3240 | 0.7400 | 70   | Annelida   | Polychaeta   | Alitta        |
| Corophium sp.                | 17.6948  | 0.0180 | 0.0374 | 955  | Arthropoda | Malacostraca | Corophium     |
| <i>Alitta succinea</i>       | 13.7269  | 0.0366 | 0.0633 | 367  | Annelida   | Polychaeta   | Alitta        |
| <i>Capitella capitata</i>    | 11.4581  | 0.0064 | 0.0290 | 1743 | Annelida   | Polychaeta   | Capitella     |
| <i>Carcinus maenas</i>       | 11.3937  | 0.0365 | 0.1819 | 286  | Arthropoda | Malacostraca | Cancer        |

**Appendix 3. Total density of the most densely occurring OTUs across the SIBES sampling sites (Sum Density). The taxonomic affiliation of each species is also provided. The first fifteen species with the most abundance are provided for each year of sampling.**

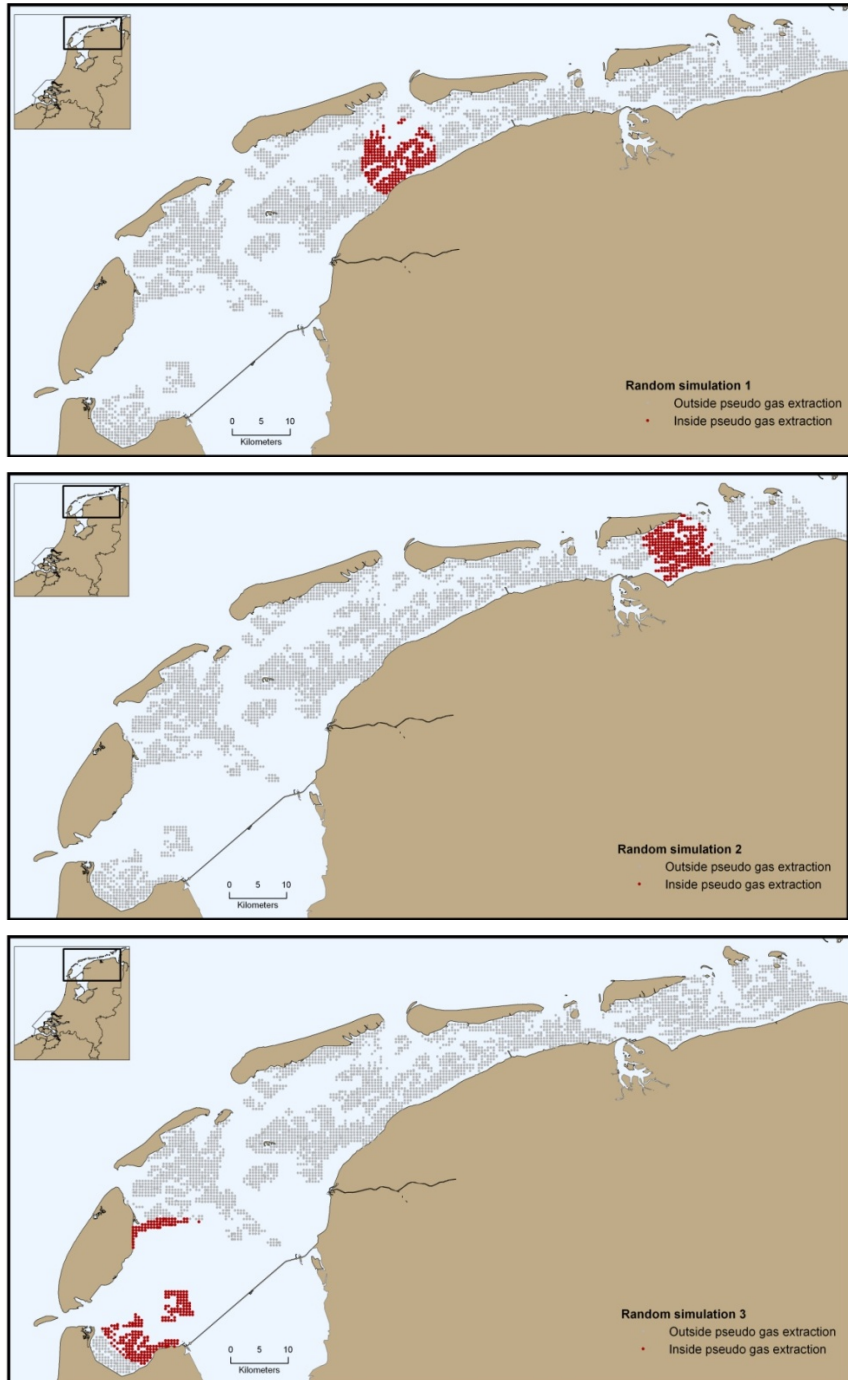
| sp                           | Sum Density | phylum     | class        | order           | family       | genus         |
|------------------------------|-------------|------------|--------------|-----------------|--------------|---------------|
| <b>2008</b>                  |             |            |              |                 |              |               |
| <i>Hydrobia ulvae</i>        | 1761621     | Mollusca   | Gastropoda   | Littorinimorpha | Hydrobiidae  | Hydrobia      |
| <i>Pygospio elegans</i>      | 1240283     | Annelida   | Polychaeta   | Spionida        | Spionidae    | Pygospio      |
| <i>Aphelochaeta marioni</i>  | 1157301     | Annelida   | Polychaeta   | Terebellida     | Cirratulidae | Aphelochaeta  |
| Oligochaeta sp.              | 972175      | Annelida   | Clitellata   |                 |              |               |
| <i>Scoloplos armiger</i>     | 611973      | Annelida   | Polychaeta   |                 | Orbiniidae   | Scoloplos     |
| <i>Lanice conchilega</i>     | 539926      | Annelida   | Polychaeta   | Terebellida     | Terebellidae | Lanice        |
| <i>Urothoe poseidonis</i>    | 499591      | Arthropoda | Crustacea    | Amphipoda       | Urothoidae   | Urothoe       |
| <i>Marenzelleria viridis</i> | 494070      | Annelida   | Polychaeta   | Spionida        | Spionidae    | Marenzelleria |
| Corophium sp.                | 480122      | Arthropoda | Malacostraca | Amphipoda       | Corophiidae  | Corophium     |
| <i>Capitella capitata</i>    | 367104      | Annelida   | Polychaeta   |                 | Capitellidae | Capitella     |
| <i>Hediste diversicolor</i>  | 242281      | Annelida   | Polychaeta   | Phyllodocida    | Nereididae   | Hediste       |
| <i>Cerastoderma edule</i>    | 195386      | Mollusca   | Bivalvia     | Veneroida       | Cardiidae    | Cerastoderma  |
| <i>Polydora cornuta</i>      | 178112      | Annelida   | Polychaeta   | Spionida        | Spionidae    | Polydora      |
| <i>Macoma balthica</i>       | 127007      | Mollusca   | Bivalvia     | Veneroida       | Tellinidae   | Macoma        |
| <i>Spio martinensis</i>      | 119962      | Annelida   | Polychaeta   | Spionida        | Spionidae    | Spio          |
| <b>2009</b>                  |             |            |              |                 |              |               |
| <i>Hydrobia ulvae</i>        | 4162560     | Mollusca   | Gastropoda   | Littorinimorpha | Hydrobiidae  | Hydrobia      |
| Corophium sp.                | 1720739     | Arthropoda | Malacostraca | Amphipoda       | Corophiidae  | Corophium     |
| <i>Scoloplos armiger</i>     | 1462766     | Annelida   | Polychaeta   |                 | Orbiniidae   | Scoloplos     |
| <i>Ensis directus</i>        | 1007507     | Mollusca   | Bivalvia     | Euheterodonta   | Pharidae     | Ensis         |
| <i>Pygospio elegans</i>      | 853485      | Annelida   | Polychaeta   | Spionida        | Spionidae    | Pygospio      |
| <i>Urothoe poseidonis</i>    | 795117      | Arthropoda | Crustacea    | Amphipoda       | Urothoidae   | Urothoe       |
| <i>Marenzelleria viridis</i> | 673363      | Annelida   | Polychaeta   | Spionida        | Spionidae    | Marenzelleria |

|                                |         |            |              |                 |               |               |
|--------------------------------|---------|------------|--------------|-----------------|---------------|---------------|
| <i>Capitella capitata</i>      | 544942  | Annelida   | Polychaeta   |                 | Capitellidae  | Capitella     |
| <i>Aphelochaeta marioni</i>    | 533014  | Annelida   | Polychaeta   | Terebellida     | Cirratulidae  | Aphelochaeta  |
| <i>Eteone longa</i>            | 342134  | Annelida   | Polychaeta   | Phyllodocida    | Phyllodocidae | Eteone        |
| <i>Lanice conchilega</i>       | 307102  | Annelida   | Polychaeta   | Terebellida     | Terebellidae  | Lanice        |
| <i>Hediste diversicolor</i>    | 305545  | Annelida   | Polychaeta   | Phyllodocida    | Nereididae    | Hediste       |
| <i>Polydora cornuta</i>        | 278178  | Annelida   | Polychaeta   | Spionida        | Spionidae     | Polydora      |
| <i>Macoma balthica</i>         | 263236  | Mollusca   | Bivalvia     | Veneroida       | Tellinidae    | Macoma        |
| <i>Oligochaeta sp.</i>         | 254268  | Annelida   | Clitellata   |                 |               |               |
| <b>2010</b>                    |         |            |              |                 |               |               |
| <i>Hydrobia ulvae</i>          | 6760038 | Mollusca   | Gastropoda   | Littorinimorpha | Hydrobiidae   | Hydrobia      |
| <i>Marenzelleria viridis</i>   | 3796196 | Annelida   | Polychaeta   | Spionida        | Spionidae     | Marenzelleria |
| <i>Corophium sp.</i>           | 1871170 | Arthropoda | Malacostraca | Amphipoda       | Corophiidae   | Corophium     |
| <i>Scoloplos armiger</i>       | 1160482 | Annelida   | Polychaeta   |                 | Orbiniidae    | Scoloplos     |
| <i>Capitella capitata</i>      | 1018808 | Annelida   | Polychaeta   |                 | Capitellidae  | Capitella     |
| <i>Urothoe poseidonis</i>      | 641962  | Arthropoda | Crustacea    | Amphipoda       | Urothoidae    | Urothoe       |
| <i>Macoma balthica</i>         | 476366  | Mollusca   | Bivalvia     | Veneroida       | Tellinidae    | Macoma        |
| <i>Lanice conchilega</i>       | 354384  | Annelida   | Polychaeta   | Terebellida     | Terebellidae  | Lanice        |
| <i>Hediste diversicolor</i>    | 326533  | Annelida   | Polychaeta   | Phyllodocida    | Nereididae    | Hediste       |
| <i>Eteone longa</i>            | 309621  | Annelida   | Polychaeta   | Phyllodocida    | Phyllodocidae | Eteone        |
| <i>Abra tenuis</i>             | 190047  | Mollusca   | Bivalvia     | Veneroida       | Semelidae     | Abra          |
| <i>Cerastoderma edule</i>      | 185084  | Mollusca   | Bivalvia     | Veneroida       | Cardiidae     | Cerastoderma  |
| <i>Polydora cornuta</i>        | 136373  | Annelida   | Polychaeta   | Spionida        | Spionidae     | Polydora      |
| <i>Phyllodoce mucosa</i>       | 95546   | Annelida   | Polychaeta   | Phyllodocida    | Phyllodocidae | Phyllodoce    |
| <i>Heteromastus filiformis</i> | 89284   | Annelida   | Polychaeta   |                 | Capitellidae  | Heteromastus  |

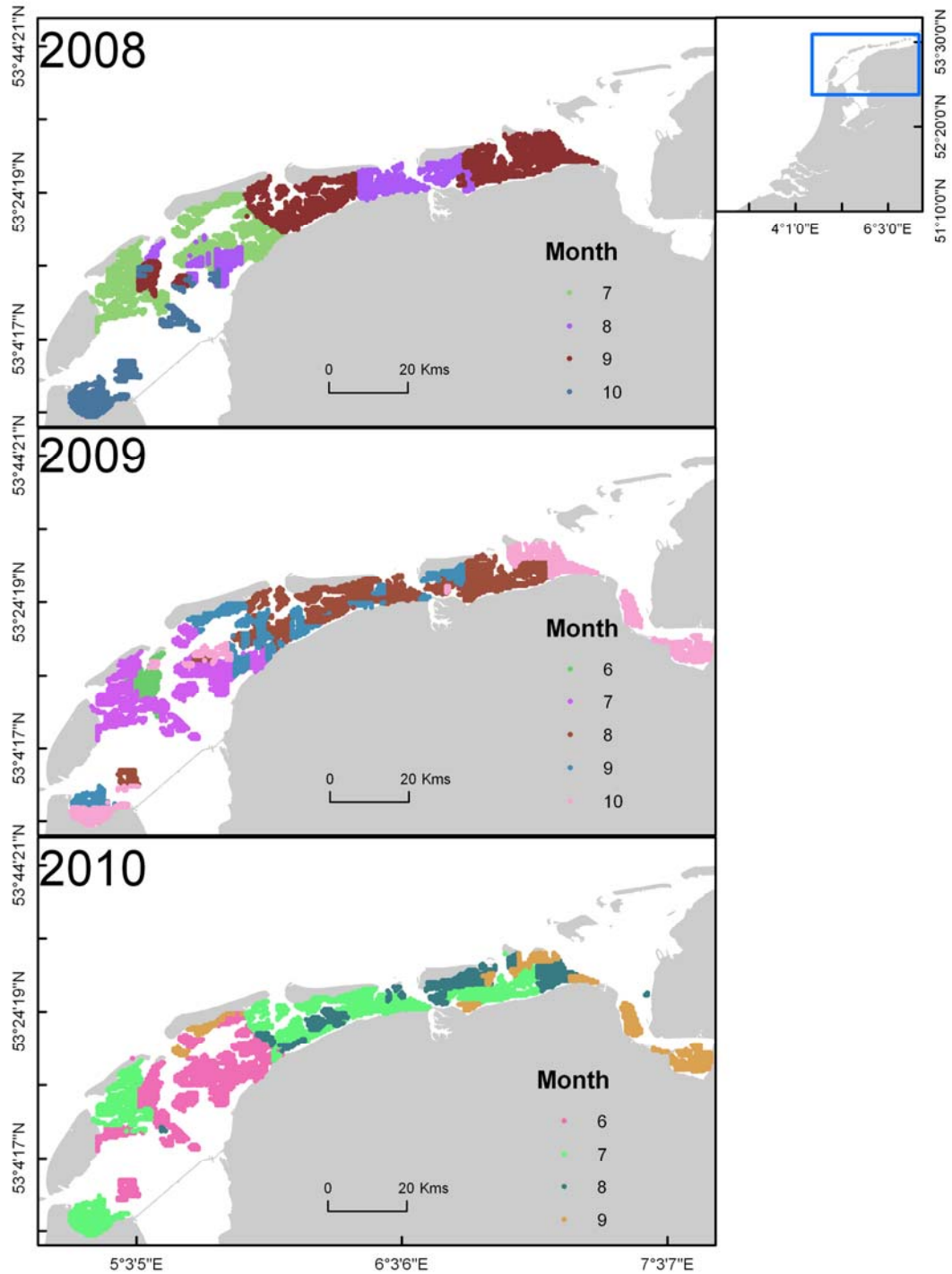
**Appendix 4. The OTUs with the widest distributional range, in terms of occurrence, across the Dutch Wadden Sea from 2008 to 2010. The number of positive observations is provided (n) and the proportion of sites where a species was sampled is given (%) for each year. The first most frequently observed species for each year are shown.**

| 2008                         |      |    | 2009                           |      |    | 2010                           |      |    |
|------------------------------|------|----|--------------------------------|------|----|--------------------------------|------|----|
| sp                           | n    | %  | sp                             | n    | %  | sp                             | n    | %  |
| <i>Scoloplos armiger</i>     | 1853 | 43 | <i>Scoloplos armiger</i>       | 2609 | 55 | <i>Scoloplos armiger</i>       | 2483 | 55 |
| <i>Pygospio elegans</i>      | 1364 | 32 | <i>Eteone longa</i>            | 1803 | 38 | <i>Marenzelleria viridis</i>   | 2162 | 48 |
| <i>Aphelochaeta marioni</i>  | 1256 | 29 | <i>Capitella capitata</i>      | 1519 | 32 | <i>Capitella capitata</i>      | 1804 | 40 |
| <i>Hediste diversicolor</i>  | 1069 | 25 | <i>Macoma balthica</i>         | 1349 | 29 | <i>Eteone longa</i>            | 1769 | 39 |
| <i>Macoma balthica</i>       | 1042 | 24 | <i>Hediste diversicolor</i>    | 1288 | 27 | <i>Macoma balthica</i>         | 1691 | 37 |
| <i>Lanice conchilega</i>     | 1003 | 23 | <i>Urothoe poseidonis</i>      | 1155 | 24 | <i>Hediste diversicolor</i>    | 1370 | 30 |
| <i>Capitella capitata</i>    | 932  | 22 | <i>Marenzelleria viridis</i>   | 1040 | 22 | <i>Urothoe poseidonis</i>      | 1055 | 23 |
| <i>Cerastoderma edule</i>    | 812  | 19 | <i>Cerastoderma edule</i>      | 998  | 21 | <i>Lanice conchilega</i>       | 1045 | 23 |
| <i>Urothoe poseidonis</i>    | 801  | 19 | <i>Lanice conchilega</i>       | 937  | 20 | Corophium sp.                  | 981  | 22 |
| <i>Nephtys hombergii</i>     | 771  | 18 | <i>Heteromastus filiformis</i> | 932  | 20 | <i>Cerastoderma edule</i>      | 802  | 18 |
| Oligochaeta sp.              | 761  | 18 | Corophium sp.                  | 886  | 19 | <i>Heteromastus filiformis</i> | 783  | 17 |
| <i>Marenzelleria viridis</i> | 738  | 17 | <i>Ensis directus</i>          | 766  | 16 | <i>Hydrobia ulvae</i>          | 682  | 15 |

**Appendix 5. Examples of three of the 1000 randomly generated subsidence regions used in a single simulated GLM model (see methods section). These regions are constructed by randomly selecting a sampling point in the Wadden Sea and selecting the nearest points.**

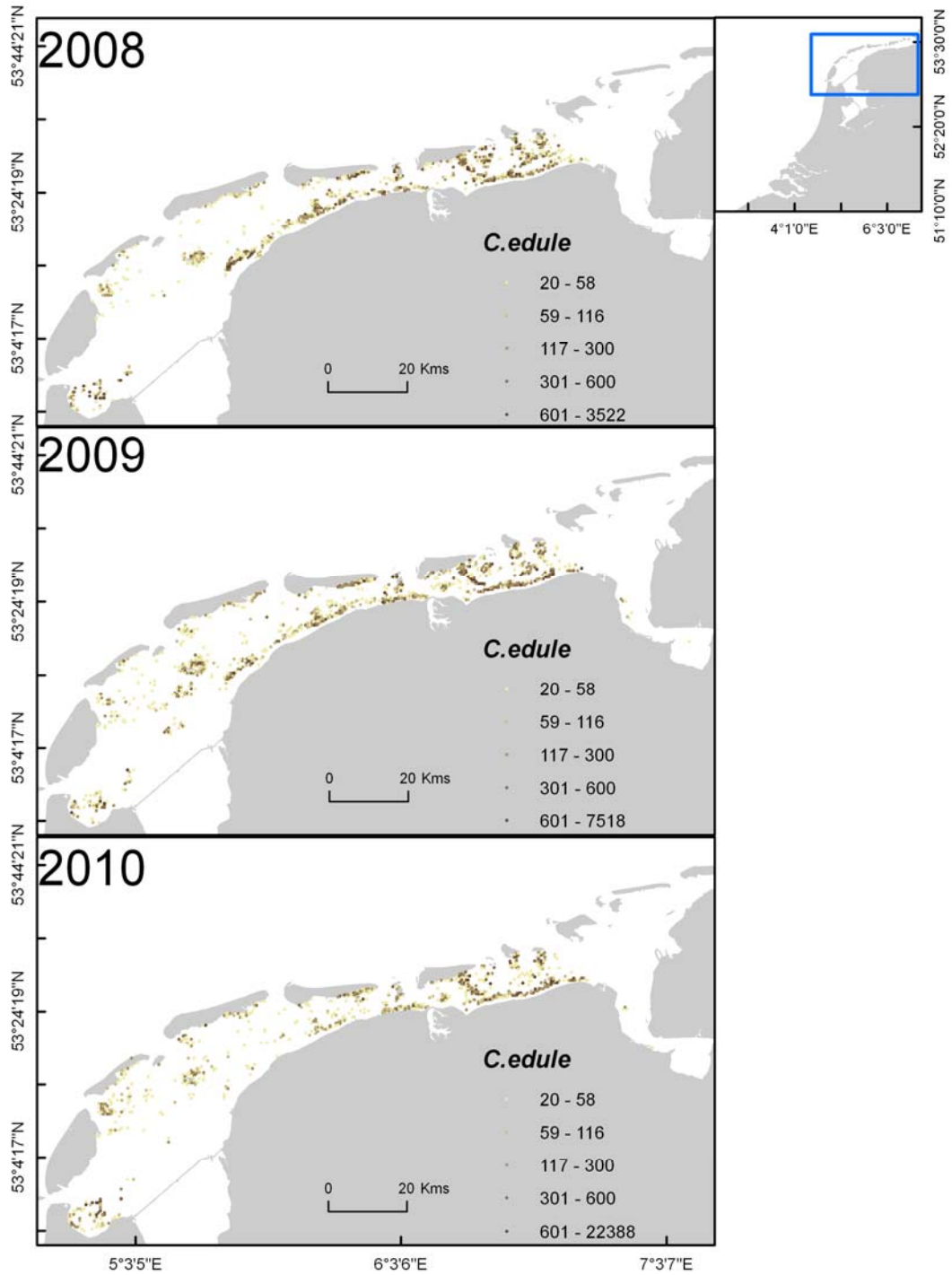


**Appendix 6. Areas sampled in each month of the SIBES survey from 2008 to 2010.**

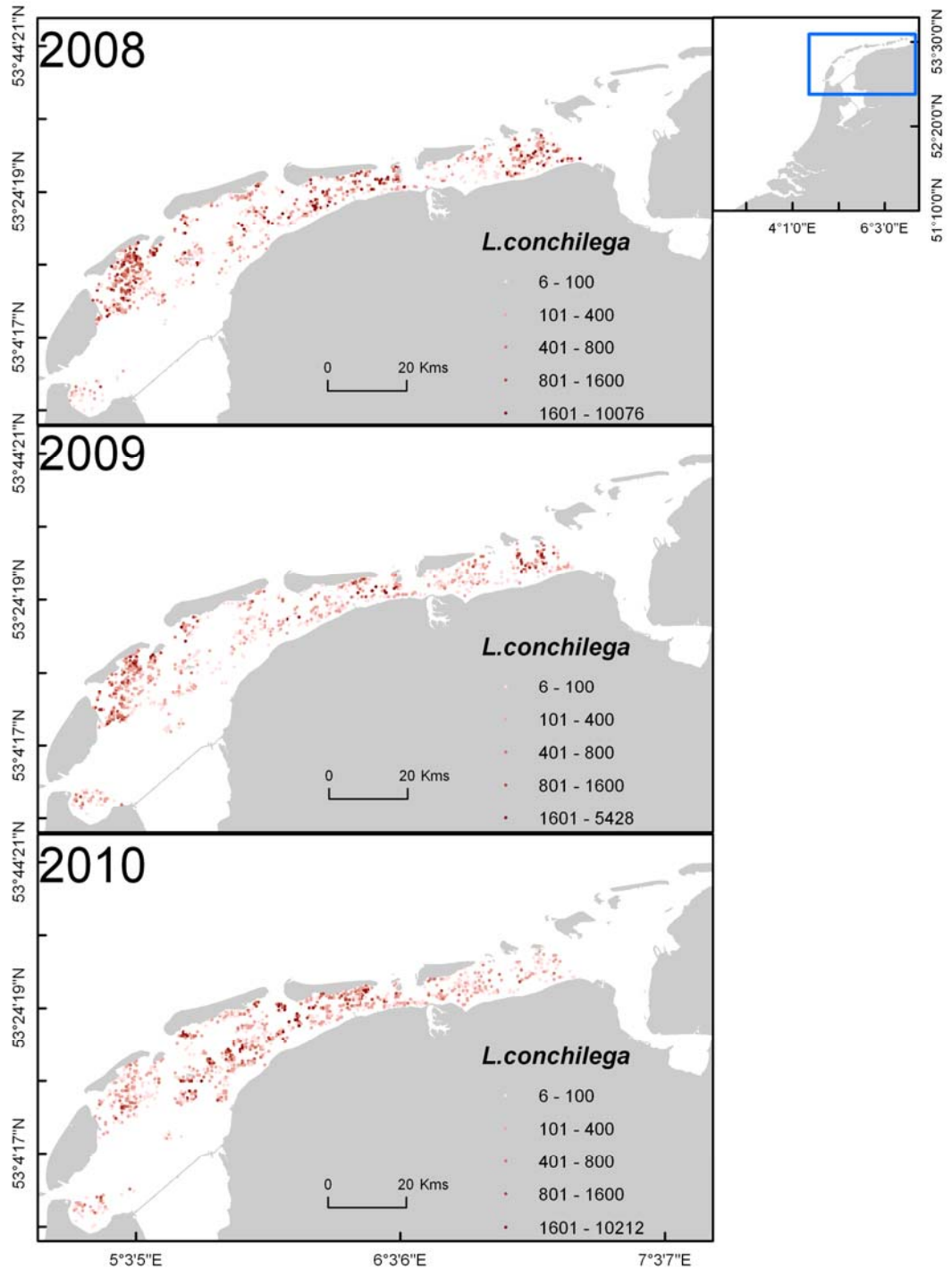




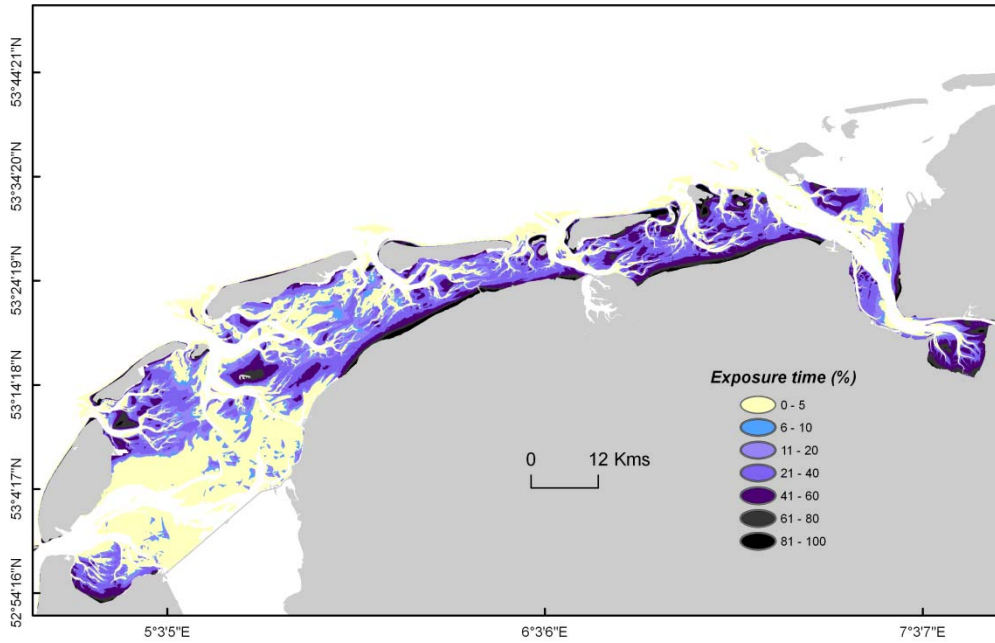
**Appendix 7. Distribution of *Cerastoderma edule* in 2008, 2009 and 2010. Darker colours indicate higher densities.**



**Appendix 8. Distribution of *Lanice conchilega* in 2008, 2009 and 2010.**  
**Darker colours indicate higher densities.**



**Appendix 9. Tidal exposure time (%) as estimated by the Rijkswaterstaat (Droogvalkaarten Voordelta by Habets LCGJM and Stoorvogel AA).**



## **Appendix 10. Protocols for macrofauna analyses.**

### Toepassingsgebied

Deze procedure is van toepassing op alle activiteiten behorende bij de analyse van macrozoöbenthos monsters

#### 2 Doel

Het doel van deze procedure is het vastleggen van de activiteiten behorende bij de analyse van in het veld verzamelde macrozoöbenthos monsters.

#### 3 Definities

Gekwalificeerd personeel   Personeel met de vaardigheid om zelfstandig benthosmonsters voor te bewerken, uit te zoeken en te determineren

Biomassa   De hoeveelheid levend materiaal die een organisme of groep van organismen vertegenwoordigt

Asvrijdrooggewicht   Een gangbare maat voor biomassa: het gewicht van één of meer in een oven gedroogde organismen verminderd met het gewicht aan as die overblijft na verbranding van die organismen in een verassingsoven.

#### 4 Verantwoordelijkheid

De aangewezen coördinator voor de analyse van macrozoöbenthos monsters is verantwoordelijk voor de correcte analyse van de macrozoöbenthos monsters in het lab volgens de in de procedure omschreven handelingen.

De aangewezen coördinator is tevens verantwoordelijk voor een goede documentatie en overdracht van de verkregen gegevens en materialen aan de coördinator die voor de verdere verwerking en data invoer verantwoordelijk is.

#### 5 Uitvoering

##### Vorbereiding

Bij geconserveerd materiaal wordt ter voorbereiding van de analyse elk monster in een zeef van bekende maaswijdte onder stromend water gespoeld. Vervolgens wordt het monster in een petrischaal overgebracht. Het label van het betreffende monster wordt op het analyse/determinatieformulier ingevuld.

##### Analyse

Determinatie van soorten: De analyse bestaat uit het determineren en tellen van de afzonderlijke macrozoöbenthos soorten. Determinatie vindt plaats aan de hand van uiterlijke kenmerken, die beschreven zijn voor de verschillende soorten in standaardwerken. Determinatie van Polychaeta, Mollusca, Crustacea en Echinodermata vindt in principe plaats tot op soortniveau, behalve voor taxa die als gevolg van de conservering onvoldoende herkenbare kenmerken vertonen (bijv. Nemertini en Oligochaeta), sommige juveniele organismen en organismen

die te zeer beschadigd zijn. Organismen > 1 cm worden met het blote oog gedetermineerd, tenzij onderscheidende kenmerken alleen microscopisch goed te zien zijn. In dat geval wordt een stereomicroscop gebruikt. Organismen <1 cm worden altijd onder een stereomicroscop gedetermineerd. Na determinatie worden per soort de aantallen geteld en op het telformulier genoteerd. Als leidraad geldt dat alleen koppen worden geteld. Indien een soort wordt gevonden die niet of niet met zekerheid gedetermineerd kan worden, wordt een externe expert geraadpleegd.

Eventueel worden reeds in het veld schelpdieren en wormen voor zo ver mogelijk gedetermineerd en geteld.

**Biomassabepaling:** Van iedere onderscheiden soort of taxon wordt vervolgens het asvrijdrooggewicht bepaald middels droging en verassing van organismen.

**Droging en verassing:** Van geconserveerde tweekleppigen wordt het vlees uit de schelp gehaald. Dit gebeurt alleen bij de grotere (vanaf 5 mm) exemplaren. Biomassabepaling geschiedt door dieren in hun geheel dan wel alleen het vlees van de dieren in een porseleinen kroes te drogen. Iedere gevulde kroes draagt een nummer dat op het telformulier achter de betreffende soort wordt genoteerd. De kroezen worden gedurende 2 tot 3 etmalen in een geventileerde stoof geplaatst bij een temperatuur van 60°C. Na droging worden de kroezen in een exsiccator geplaatst, en na afkoeling tot omgevingstemperatuur gewogen op een elektronische balans, gekoppeld aan een computer, waarbij nummer van de kroes en totaal gewicht van de kroes met inhoud genoteerd wordt. Na deze eerste weging worden de kroezen met inhoud geplaatst in een oven om bij een temperatuur van 560°C gedurende 5 uur te worden verast (verbrand). Na te zijn afgekoeld worden de kroezen weer in een exsiccator geplaatst, en na afkoeling tot omgevingstemperatuur voor een tweede maal gewogen, waarbij waarbij wederom nummer van de kroes en totaal gewicht van de kroes met inhoud genoteerd wordt. Het verschil tussen beide wegingen levert het asvrij drooggewicht op.

#### Kwalificatie van medewerkers

Uitvoeren analyse/determinatie van monsters kan door gekwalificeerd personeel op zelfstandige basis worden uitgevoerd, door niet gekwalificeerd personeel uitsluitend onder supervisie van gekwalificeerd personeel. Onder supervisie houdt in dit geval in dat determinaties steekproefsgewijs gecontroleerd worden door gekwalificeerd personeel.

## **Appendix 11. Protocols for sediment analyses.**

### Toepassingsgebied

Deze procedure is van toepassing op alle activiteiten behorende bij de analyse van sediment monsters.

### 2 Doel

Het doel van deze procedure is het vastleggen van de activiteiten behorende bij de analyse van sediment monsters.

### 3 Definities

Coulter counter: Elektronische deeltjesteller

### 4 Verantwoordelijkheid

De aangewezen coördinator voor de analyse van sediment monsters is verantwoordelijk voor de correcte analyse van de sediment monsters in het lab volgens de in de procedure omschreven handelingen.

De aangewezen coördinator is tevens verantwoordelijk voor een goede documentatie en overdracht van de verkregen gegevens en materialen aan de coördinator die voor de verdere verwerking en data invoer verantwoordelijk is.

### 5 Uitvoering

Binnen de sedimentanalyse wordt gebruik gemaakt van twee Coulter "deeltjestellers": de Coulter LS 230 en de Coulter Beckman LS 13 320 met Autoprep. Deze hebben ieder hun eigen behandel- en meetmethode.

#### Coulter LS 230

##### Vorbereiding

Ieder monster wordt in een glazen potje gevriesdroogd. Dit proces duurt afhankelijk van de hoeveelheid water in het monster enkele uren tot 3 dagen. Vervolgens wordt het monster gezeefd over een 2 mm zeef. Indien er materiaal op de zeef achterblijft wordt dit gewogen, alsook de fractie < 2mm. Beide gewichten worden genoteerd. Van de fractie < 2 mm worden nu enkele grammen afgewogen en bewaard voor analyse met de Coulter counter

##### Analyse

De analyse kan nu op 3 manieren plaatsvinden:

- a. Zonder chemicaliën: Aan het afgewogen materiaal wordt demiwater toegevoegd waarna het monster direct in de Coulter counter wordt gemeten.
- b. Na toevoeging van H<sub>2</sub>O<sub>2</sub>: Aan het afgewogen materiaal wordt demiwater + H<sub>2</sub>O<sub>2</sub> toegevoegd. Vervolgens wordt het monster 7 uur op het zandbad of in de droogstof geplaatst. Op deze wijze wordt alle organisch materiaal uit het monster verwijderd. Aan het monster wordt nu weer demiwater toegevoegd waarna het materiaal minstens 3 nachten de tijd krijgt om te bezinken. Nu wordt het monster afgezogen. Vervolgens wordt het monster doorgemeten in de Coulter counter in demiwater waaraan natriumpyrofosfaat is toegevoegd.
- c. Na toevoeging van H<sub>2</sub>O<sub>2</sub> en HCl: Aan het afgewogen materiaal wordt demiwater + H<sub>2</sub>O<sub>2</sub> + HCl toegevoegd. Vervolgens wordt het monster 7 uur op het zandbad of in de droogstof geplaatst. Op deze wijze wordt alle organisch materiaal en kalk uit het monster verwijderd. Aan het monster wordt nu weer demiwater toegevoegd waarna het materiaal minstens 3 nachten de tijd krijgt om te bezinken. Nu wordt het monster afgezogen. Vervolgens wordt het monster doorgemeten in de Coulter counter in demiwater waaraan natriumpyrofosfaat is toegevoegd.

#### Coulter Beckman LS 13 320 met Autoprep

#### Vorbereiding

Ieder monster wordt waar nodig in een kunststof potje over gebracht en gevriesdroogd. Dit proces duurt afhankelijk van de hoeveelheid water in het monster enkele uren tot 3 dagen.

Hierna kan de voorbereiding op twee manieren worden voortgezet: Niet voorbehandeld en voorbehandeld.

#### Niet voorbehandeld

Het monster wordt over een 2 mm zeef ingewogen in een 13 ml PP reageerbuis (deeltjes groter dan 2 mm kunnen de meetcel beschadigen en worden dus niet gemeten). Vervolgens wordt RO (Reversed Osmosis) water toegevoegd om de sediment deeltjes in suspensie te brengen. Vervolgens kunnen de gevulde buizen in de Autoprep module van de Coulter Beckman LS 13 320 gezet worden en zijn ze gereed om gemeten te worden.

#### Voorbehandeld

Het monster wordt over een 2 mm zeef ingewogen in een 50 ml PP centrifugebuis (deeltjes groter dan 2 mm kunnen de meetcel beschadigen en worden dus niet gemeten). Vervolgens wordt aan elke centrifugebuis 15 ml RO water toegevoegd. Hierna volgt respectievelijk 15 ml 35% H<sub>2</sub>O<sub>2</sub>-oplossing (waterstofperoxide) en 12 ml 0.5N HCl-oplossing (zoutzuur) toegevoegd. Daarna wordt de centrifugebuis aangevuld tot de 45 ml markering met RO water. De buizen (er kunnen 30 buizen per serie gemeten worden) worden een nacht (± 16 uur) bij 80 °C in een stoof gezet.

De volgende ochtend worden de monsters, na afkoeling, aangevuld met RO water om het verdampte vocht te vervangen. Hierna gaan de buizen 5 minuten bij 3000 toeren per minuut in een centrifuge. Vervolgens worden de chemicaliën boven het sediment afgezogen met behulp van een waterstraalpomp. Aan de buizen wordt respectievelijk 5 ml RO water en 2,2 ml Natriumpyrofosfaat-oplossing toegevoegd, waarna de buizen met behulp van een vortex reageerbuisschudder gehomogeniseerd worden. De centrifugebuizen worden tot de 40 ml markering aangevuld met RO water en 12 minuten bij 3000 toeren per minuut gecentrifugeerd. De vloeistof boven het sediment wordt afgezogen en het monster wordt overgespoeld in een 13 ml PP reageerbuis. Vervolgens kunnen de gevulde

buizen in de Autoprep module van de Coulter Beckman LS 13 320 gezet worden en zijn ze gereed om gemeten te worden.

#### Analyse

Na het invullen van de monster gegevens in de aan de het apparaat gekoppelde computer kunnen de monsters gemeten worden. De Beckman Coulter LS 13 320 is een deeltjesgrootte analyser die werkt volgens het principe van laserdiffractie en lichtverstrooiingsmeting (PIDS).

De methode werkt ruwweg als volgt;

Een laser vuurt een laserstraal af op de deeltjes in de meetcel. Het licht dat op de deeltjes komt wordt verstrooid in verschillende richtingen. Vervolgens pikken de 132 detectoren die rondom de meetcel geplaatst zijn (een deel) het licht weer op. Aan de hand van de intensiteit van het licht en de hoek waaronder deze op de detector valt kan via een complex algoritme de grootte van het deeltje berekend worden.

Standard Operating Procedure (SOM) Coulter LS 13 320 Autosampler

File name: SIBES-autoprep\_alm\_ap.som

SOM Description: SIBES-autoprep

Sample Description:

File ID:

Sample number:



## Report 2012.1.SIBES.NIOZ

Comment 1:

Comment 2:

Run number:

Control Sample: No

Sample Density: 0 g/mL

Fluid: Water

Include PIDS: Yes

Use Auto-Prep Station: Yes

File Name Template: <F20>\_<S20>\_<R4>\_<U1>.<X>

Run folder: C:\LS13320\Runfiles

Run length: 90 seconds

Number of runs: 1

Pump speed: 76

Sonicate before first run: No

Sonicate during run: No

Compute sizes: Yes

Optical model: grijs.rf780d PIDS included

Save file: Yes

Export size data: Yes

Print report: No

Repeat Cycle: Yes

Auto Rinse first: No

Measure Offsets: Yes

Align: Yes

Measure Background: Yes

Measure Loading: Load sample using Auto-Prep Station

Enter Sample Info: No

Start Run(s): Yes

Auto Rinse Last: Yes

### Auto-Prep Station Settings

Sonicate for 5 seconds

Sonicate Power: 5

Empty tube for 4 seconds

Pulsed Flush for 3 seconds

Wait after emptying for 2 seconds

Auto-Dilute: No

### Kwalificatie van medewerkers

Uitvoeren analyse/determinatie van monsters kan door gekwalificeerd personeel op zelfstandige basis worden uitgevoerd, door niet gekwalificeerd personeel uitsluitend onder supervisie van gekwalificeerd personeel.

